

CAPE MAY LATERAL REPLACEMENT - PHASE 2

US ROUTE 9 TRAFFIC CONTROL PLAN

DENNIS & MIDDLE TWP, CAPE MAY COUNTY, NEW JERSEY



C:\Users\dalebee\OneDrive - Mastec\Gas\GIS (South Jersey Gas)\FY25\Cape May\Pic23	
Location: RND Unit TCP-Long	
10/24/2025	
dalebee	
DRAWING LOCATION	
LAST DATE SAVED	
LAST SAVE BY	

NOTE TO CONTRACTOR:
BEFORE PERFORMING ANY WORK, THE CONTRACTOR SHALL CONTACT THE "DIG NUMBER" (PHONE 800-272-1000) FOR A MARK-OUT OF ALL UNDERGROUND UTILITIES. IT IS THE RESPONSIBILITY OF THE CONTRACTOR TO CONTACT THE "DIG NUMBER" AND TO ASCERTAIN THE LOCATION OF ALL UNDERGROUND CONSTRUCTION IN THE AREA OF THE PROJECT.

THE CONTRACTOR SHALL CONDUCT TEST PITS TO VERIFY THE LOCATIONS OF UNDERGROUND UTILITIES WHERE POTENTIAL CONFLICTS MAY OCCUR OR WHERE DISCREPANCIES ARE PRESENT BETWEEN THE PLAN AND UNDERGROUND UTILITY MARK-OUTS.

THESE TEST PITS SHALL BE IN ADDITION TO THE SPECIFIED TEST PIT LOCATIONS AS DENOTED ON THE PLANS AND SHALL NOT BE LIMITED TO EXCAVATION SOLELY BUT INCLUDE ANY ADDITIONAL MEANS TO DETERMINING THE LOCATION OF UTILITIES IN QUESTION.



CALL BEFORE YOU DIG
1-800-272-1000

TO LOCATE UNDERGROUND UTILITIES
IF YOU'RE GOING TO DIG, BLAST OR DRILL
THREE (3) WORKING DAYS NOTICE

REMEMBER
IT'S THE LAW!
Dig Safely.

No.	REVISION	APPROVE	DATE
1	ISSUED FOR SUBMITTAL		7/27/2025
2	REVISED PER NJDOT COMMENTS		9/09/2025
3	REVISED PER NJDOT COMMENTS		10/24/2025
4	REVISED PER NJDOT COMMENTS		10/29/2025
5			
6			
7			
8			
9			


--

JAMES M DEYERLE, PE
NJ LICENSE #24GE06090400



Professional Services

450 DAVIS DRIVE, PLYMOUTH MEETING, PA 19462
OFFICE NUMBER: 484-344-2161



SOUTH JERSEY GAS
1 SOUTH JERSEY PLACE, ATLANTIC CITY, NJ 08401
TELEPHONE: (609) 581-8000 FAX: 609-852-2371

PROPOSED 12" STEEL GAS TRANSMISSION LINE
PERMIT DRAWINGS
CAPE MAY DIVISION

CAPE MAY LATERAL REPLACEMENT - PHASE 2
COVER SHEET

DENNIS & MIDDLE TWP	CAPE MAY	NEW JERSEY					
DRAWN BY	DT	DATE	10/24/2025	PLATE MAP	MULTIPLE		
CHECKED BY	RA	SCALE	1" = 2,000'	WORK ORDER	5436482		
APPROVED BY	JD	SHEET	1	OF	14	SHEET NUMBER	TCP-C

NOTE TO CONTRACTOR:
BEFORE PERFORMING ANY WORK, THE CONTRACTOR SHALL CONTACT THE "DIG NUMBER" (PHONE 800-272-1000). FOR A MARK-OUT OF ALL UNDERGROUND UTILITIES. IT IS THE RESPONSIBILITY OF THE CONTRACTOR TO CONTACT THE "DIG NUMBER" AND TO ASCERTAIN THE LOCATION OF ALL UNDERGROUND CONSTRUCTION IN THE AREA OF THE PROJECT.

THE CONTRACTOR SHALL CONDUCT TEST PITS TO VERIFY THE LOCATIONS OF UNDERGROUND UTILITIES WHERE POTENTIAL CONFLICTS MAY OCCUR OR WHERE DISCREPANCIES ARE PRESENT BETWEEN THE PLAN AND UNDERGROUND UTILITY MARK-OUTS.

THESE TEST PITS SHALL BE IN ADDITION TO THE SPECIFIED TEST PIT LOCATIONS AS DENOTED ON THE PLANS AND SHALL NOT BE LIMITED TO EXCAVATION SOLELY BUT INCLUDE ANY ADDITIONAL MEANS TO DETERMINING THE LOCATION OF UTILITIES IN QUESTION.



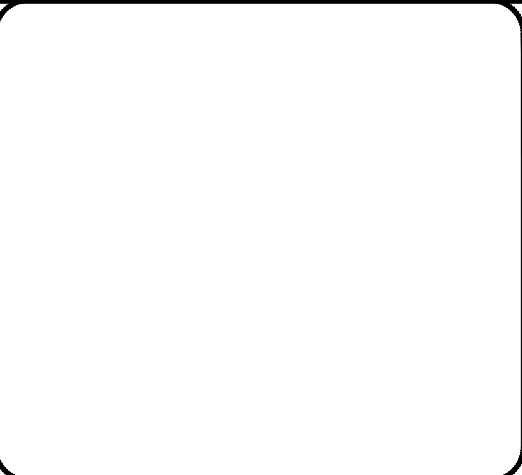
CALL BEFORE YOU DIG
1-800-272-1000

TO LOCATE UNDERGROUND UTILITIES
IF YOU'RE GOING TO DIG, BLAST OR DRILL
THREE (3) WORKING DAYS NOTICE

REMEMBER
IT'S THE LAW!

Dig Safely.

No.	REVISION	APPROVE	DATE
1	ISSUED FOR SUBMITTAL		7/27/2025
2	REVISED PER NJDOT COMMENTS		9/09/2025
3	REVISED PER NJDOT COMMENTS		10/24/2025
4	REVISED PER NJDOT COMMENTS		10/29/2025
5			
6			
7			
8			
9			




JAMES M DEYERLE, PE
NJ LICENSE #24GE06090400



Professional Services

450 DAVIS DRIVE, PLYMOUTH MEETING, PA 19462
OFFICE NUMBER: 484-344-2161



SOUTH JERSEY GAS
1 SOUTH JERSEY PLACE, ATLANTIC CITY, NJ 08401
TELEPHONE: (609) 581-8000 FAX: 609-852-2371

PROPOSED 12" STEEL GAS TRANSMISSION LINE
PERMIT DRAWINGS
CAPE MAY DIVISION

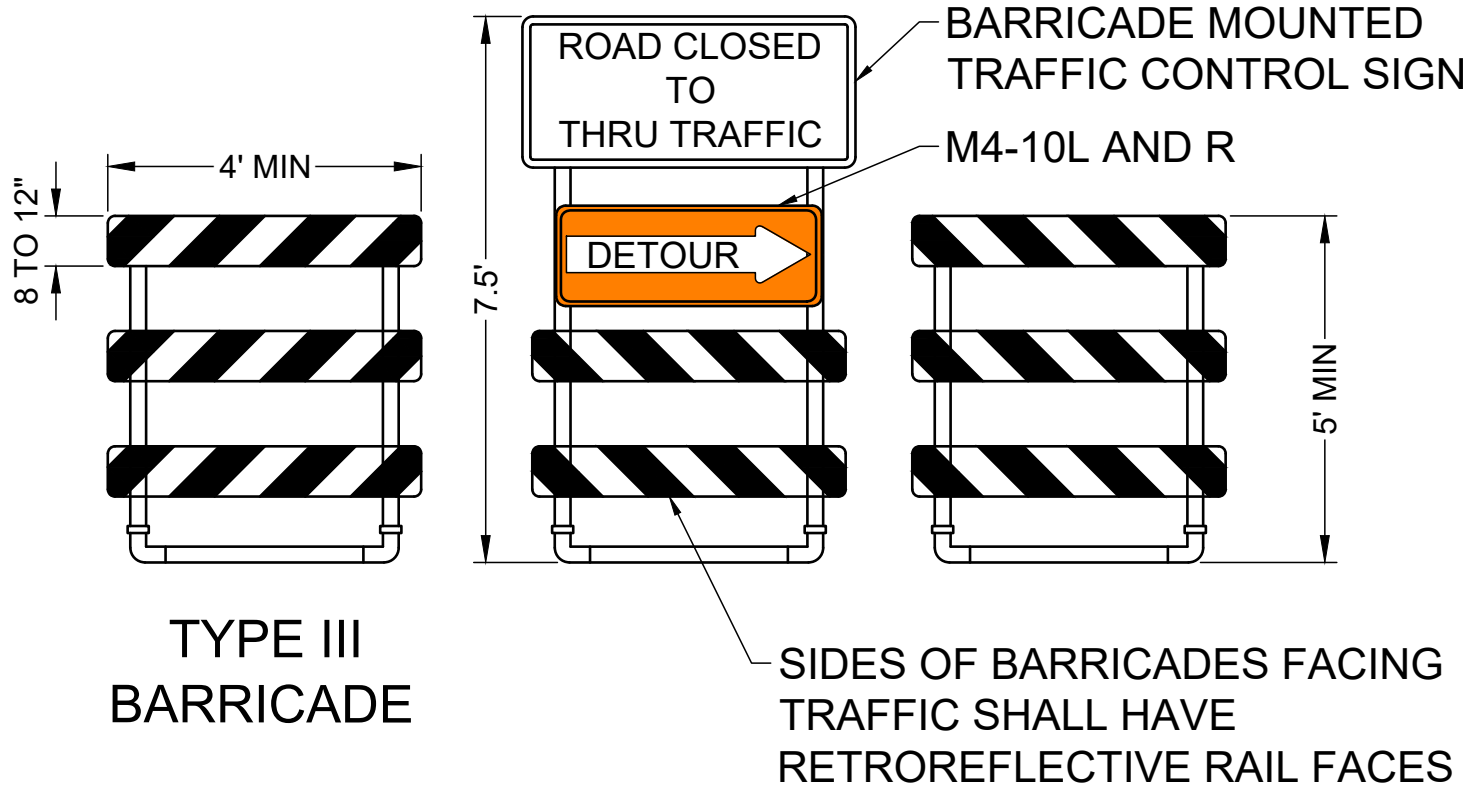
CAPE MAY LATERAL REPLACEMENT - PHASE 2
COVER SHEET

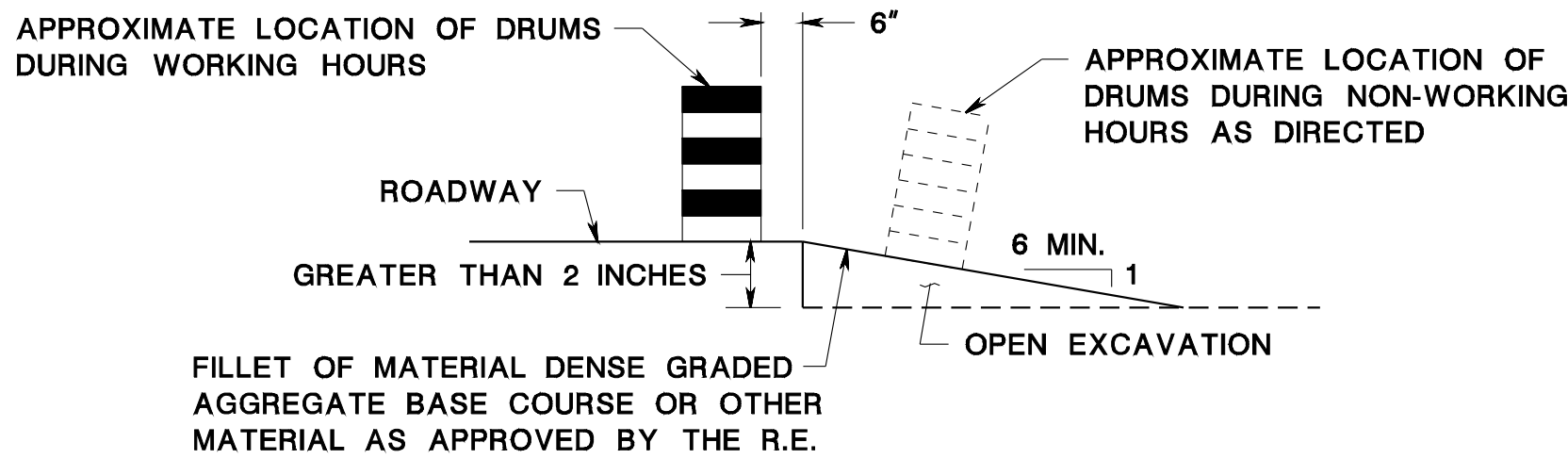
DENNIS & MIDDLE TWP	DT	DATE	10/24/2025	PLATE MAP	MULTIPLE
CHECKED BY	RA	SCALE	1" = 2,000'	WORK ORDER	5436482
APPROVED BY	JD	SHEET	2 OF 14	SHEET NUMBER	TCP-C

ADVANCED NOTICE OF ROAD CLOSURE

- A. ADVANCED NOTICE ROAD CLOSURE SIGNS TO BE POSTED A MINIMUM OF 6 DAYS BEFORE CLOSURE FOR EACH SECTION.
- B. SIGNS TO BE POSTED AT BOTH THE BEGINNING AND END OF THE CLOSURE SECTIONS.
- C. SIGNS MAY BE VARIABLE MESSAGE BOARDS (PREFERRED) OR PREFABRICATED SIGNS. MESSAGES TO READ:
- C.1. ROUTE 9 TO CLOSE
- C.2. STARTING XX/XX/XX [PLANNED CALENDAR DATE]
- D. ROAD CLOSURE NOTICE SIGNS TO BE POSTED WHILE ROAD IS CLOSED. MESSAGES TO READ:
- D.1. ROUTE 9 CLOSED
- D.2. FOLLOW POSTED DETOUR

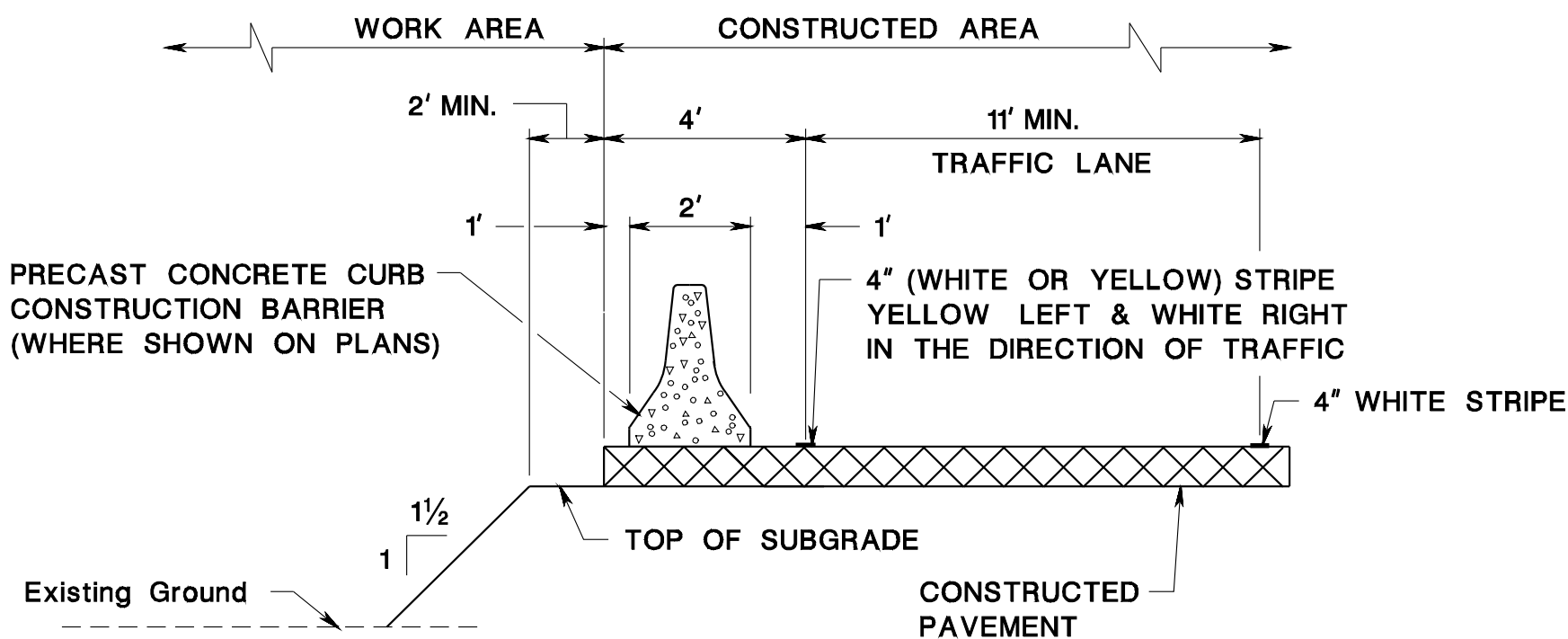
NJDOT STANDARD CONSTRUCTION DETAILS
(ROADWAY, TRAFFIC CONTROL, & BRIDGE)





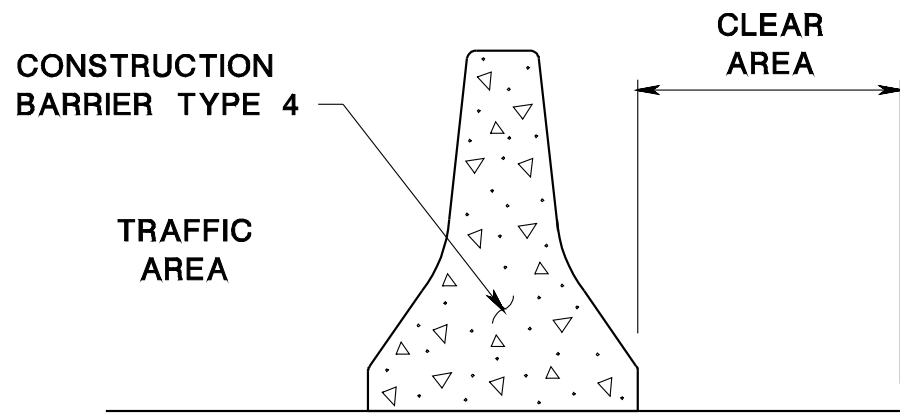
NOTE:
ESCAPE RAMPS MUST BE CONSTRUCTED AND MAINTAINED DURING NON-WORKING HOURS WHERE A VERTICAL DROP GREATER THAN 2 INCHES EXISTS ADJACENT TO TRAVELED LANE.

ESCAPE RAMP DETAIL



TYPICAL SECTION

PLACEMENT OF PRECAST CONCRETE CONSTRUCTION BARRIER



- NOTES:**
- CHANGES TO THE PROPOSED JOINT CLASS AT ANY LOCATION MUST BE APPROVED BY THE DEPT.
 - NO ROADWAY DROP OFFS, OBSTRUCTIONS, STORAGE OF MATERIALS OR WORK WILL BE PERMITTED IN THE CLEAR AREA UNLESS APPROVED BY THE R.E.

STAGE	LOCATION	JOINT CLASS
	RTE. STA. TO STA.	

JOINT CLASS	CLEAR AREA
A	20 INCHES
B	16 INCHES
C	11 INCHES

**CONSTRUCTION BARRIER, TYPE 4
JOINT CLASS AND CLEAR AREA**

REGULATORY APPROACH SPEED OF TRAFFIC MILES/HOUR	RECOMMENDED SIGHT DISTANCE TO BEGINNING OF CHANNELIZING TAPERS		
	DESIRABLE		MINIMUM
	RURAL FEET	URBAN FEET	RURAL AND URBAN FEET
25	375	525	150
30	450	625	200
35	525	725	250
40	600	825	325
45	675	925	400
50	750	1025	475
55	875	1150	550
60	1000	1275	650
65	1050		725

- NOTES:**
- AVOIDANCE MANEUVER IS FOR A SPEED, PATH, AND/OR DIRECTION CHANGE PRIOR TO THE BEGINNING OF CHANNELIZING TAPERS.
 - RECOMMENDED DISTANCES BETWEEN TWO SEPARATE LANE CLOSURES SHALL BE DOUBLE THE VALUES SHOWN ABOVE.
 - RURAL AND URBAN ROAD DESIGNATIONS SHALL BE AS DEFINED IN THE NJDOT STATE HIGHWAY STRAIGHT LINE DIAGRAMS.
 - DESIRABLE VALUES SHALL BE PROVIDED WHEREVER POSSIBLE. IF IT IS NOT FEASIBLE OR PRACTICAL TO PROVIDE DESIRABLE VALUES BECAUSE OF HORIZONTAL OR VERTICAL CURVATURE OR IF RELOCATION OF THE TAPER IS NOT POSSIBLE, THEN MINIMUM VALUES CAN BE APPLIED. WHEN MINIMUM VALUES ARE USED, SPECIAL ATTENTION SHOULD BE GIVEN TO THE USE OF SUITABLE TRAFFIC CONTROL DEVICES FOR PROVIDING ADVANCED WARNING OF THE CONDITIONS THAT ARE LIKELY TO BE ENCOUNTERED.
 - TAPERS SHALL BE LOCATED TO MAXIMIZE THE VISIBILITY OF THEIR TOTAL LENGTH.

RECOMMENDED TAPER LENGTH AND SPACING FOR CHANNELIZING TAPERS					RECOMMENDED SPACING ALONG TANGENTS	
REGULATORY APPROACH SPEED OF TRAFFIC MILES/HOUR	MINIMUM TAPER RATIO IN LENGTH PER FOOT OF WIDTH	MINIMUM TAPER LENGTH L – FOR LANE WIDTHS			MAXIMUM DEVICE (B) SPACING ALONG TAPERS IN FEET	MAXIMUM DEVICE (D) SPACING ALONG TANGENTS IN FEET
		10'	11'	12'		
25	10.5:1	105	115	125	25	50
30	15:1	150	165	180	30	60
35	20.5:1	205	225	245	35	70
40	27:1	270	300	325	40	80
45	45:1	450	495	540	45	90
50	50:1	500	550	600	50	100
55	55:1	550	605	660	55	110
60	60:1	600	660	720	60	120
65	65:1	650	715	780	65	130

NOTE:
THE MAXIMUM DEVICE SPACING ALONG CURVES SHALL BE AS DEFINED FOR TAPERS (B) IN THE ABOVE TABLE.

NOTE TO DESIGNER:

THIS SHEET REQUIRES DESIGN SPECIFIC INFORMATION TO BE ADDED AND INCLUDED IN THE CONTRACT PLANS.

REMOVE THIS NOTE AFTER DESIGN SPECIFIC INFORMATION IS ADDED.

N.T.S.

TCD-2

NEW JERSEY DEPARTMENT OF TRANSPORTATION

TRAFFIC CONTROL DETAILS

101
146

NOTE TO CONTRACTOR:
BEFORE PERFORMING ANY WORK, THE CONTRACTOR SHALL CONTACT THE "DIG NUMBER" (PHONE 800-272-1000) FOR A MARK-OUT OF ALL UNDERGROUND UTILITIES. IT IS THE RESPONSIBILITY OF THE CONTRACTOR TO CONTACT THE "DIG NUMBER" AND TO ASCERTAIN THE LOCATION OF ALL UNDERGROUND CONSTRUCTION IN THE AREA OF THE PROJECT.

THE CONTRACTOR SHALL CONDUCT TEST PITS TO VERIFY THE LOCATIONS OF UNDERGROUND UTILITIES WHERE POTENTIAL CONFLICTS MAY OCCUR OR WHERE DISCREPANCIES ARE PRESENT BETWEEN THE PLAN AND UNDERGROUND UTILITY MARK-OUTS.

THESE TEST PITS SHALL BE IN ADDITION TO THE SPECIFIED TEST PIT LOCATIONS AS DENOTED ON THE PLANS AND SHALL NOT BE LIMITED TO EXCAVATION SOLELY BUT INCLUDE ANY ADDITIONAL MEANS TO DETERMINING THE LOCATION OF UTILITIES IN QUESTION.



CALL BEFORE YOU DIG
1-800-272-1000
TO LOCATE UNDERGROUND UTILITIES
IF YOU'RE GOING TO DIG, BLAST OR DRILL
THREE (3) WORKING DAYS NOTICE

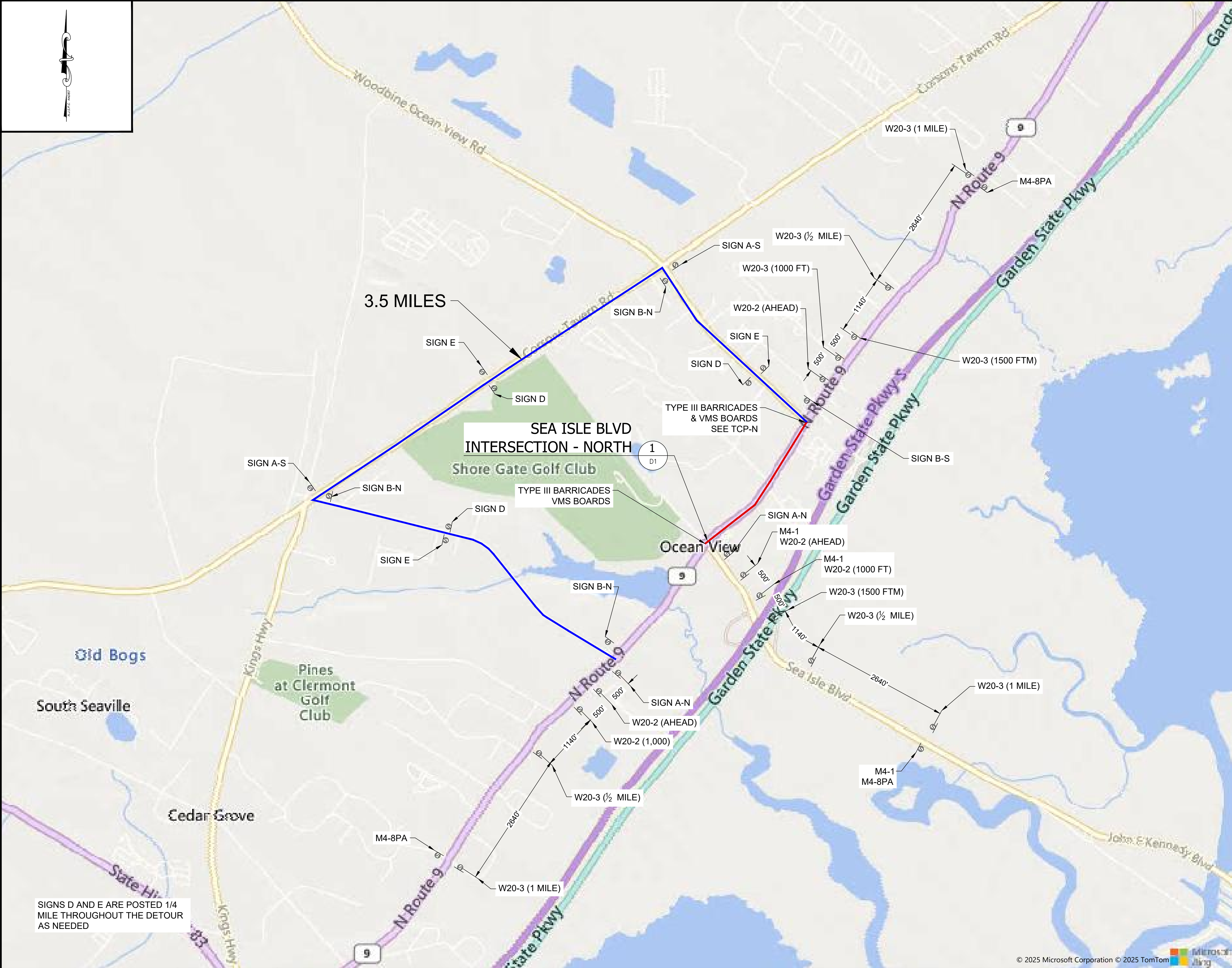
REMEMBER
IT'S THE LAW!
Dig Safely.

No.	REVISION	APPROVE	DATE
1	ISSUED FOR SUBMITTAL		7/27/2025
2	REVISED PER NJDOT COMMENTS		9/09/2025
3	REVISED PER NJDOT COMMENTS		10/24/2025
4	REVISED PER NJDOT COMMENTS		10/29/2025
5			
6			
7			
8			
9			

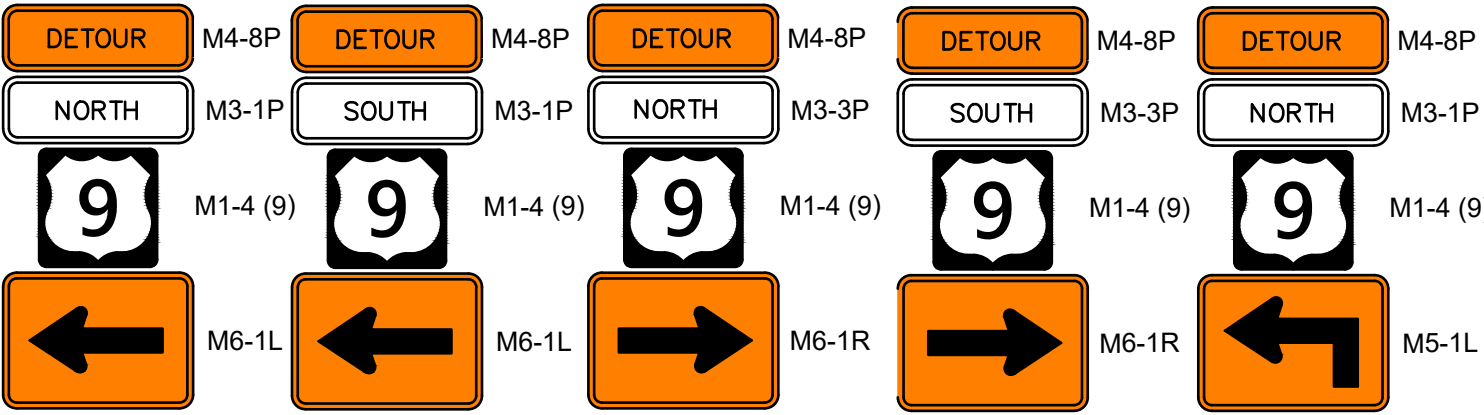
JAMES M DEYERLE, PE
NJ LICENSE #24GE06090400

MasTec
Professional Services
450 DAVIS DRIVE, PLYMOUTH MEETING, PA 19462
OFFICE NUMBER: 484-344-2161

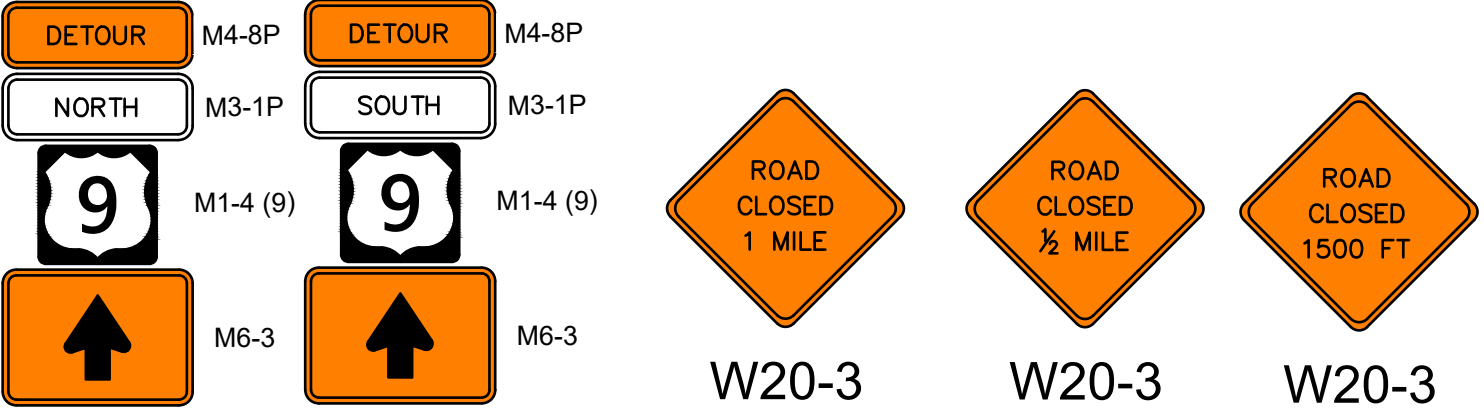
SOUTH JERSEY GAS 1 SOUTH JERSEY PLACE, ATLANTIC CITY, NJ 08401 TELEPHONE: (609) 581-8000 FAX: 609-852-2371			
PROPOSED 12" STEEL GAS TRANSMISSION LINE PERMIT DRAWINGS CAPE MAY DIVISION			
CAPE MAY LATERAL REPLACEMENT - PHASE 2 NJDOT STANDARD CONSTRUCTION DETAILS			
DENNIS & MIDDLE TWP	CAPE MAY	NEW JERSEY	
DRAWN BY	DT	DATE	10/24/2025
CHECKED BY	RA	SCALE	1" = 2,000'
APPROVED BY	JD	SHEET	4 OF 14
PLATE MAP	MULTIPLE	WORK ORDER	5436482
SHEET NUMBER	TCP-C		



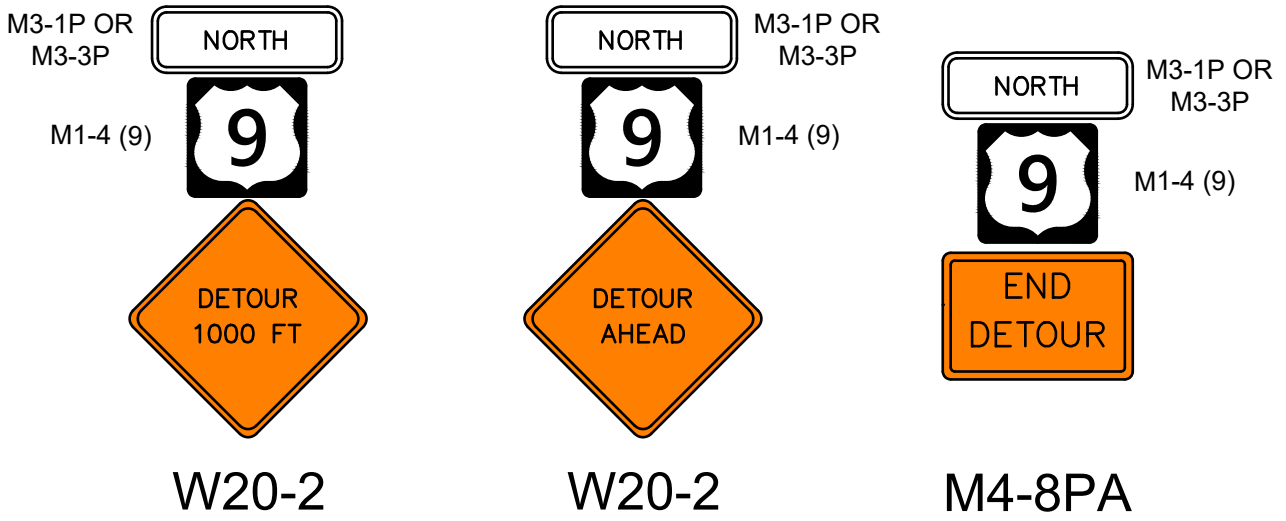
ROAD CLOSURE
DETOUR



SIGN A-N SIGN A-S SIGN B-N SIGN B-S SIGN C



SIGN D SIGN E



CONSTRUCTION SIGN TABLE

SIGN DESIGNATION	REQUIRED QUANTITY
M4-8P	8
M1-4	8
M6-1	8
M5-1L	1
W20-3	6
W20-2	2
M4-8PA	2
R11-4	2
M4-10L	1
M4-10R	1
CONSTRUCTION SIGN TOTALS	39

NOTE TO CONTRACTOR:
BEFORE PERFORMING ANY WORK, THE CONTRACTOR SHALL CONTACT THE "DIG NUMBER" (PHONE 800-272-1000) FOR A MARK-OUT OF ALL UNDERGROUND UTILITIES. IT IS THE RESPONSIBILITY OF THE CONTRACTOR TO CONTACT THE "DIG NUMBER" AND TO ASCERTAIN THE LOCATION OF ALL UNDERGROUND CONSTRUCTION IN THE AREA OF THE PROJECT.

THE CONTRACTOR SHALL CONDUCT TEST PITS TO VERIFY THE LOCATIONS OF UNDERGROUND UTILITIES WHERE POTENTIAL CONFLICTS MAY OCCUR OR WHERE DISCREPANCIES ARE PRESENT BETWEEN THE PLAN AND UNDERGROUND UTILITY MARK-OUTS.

THESE TEST PITS SHALL BE IN ADDITION TO THE SPECIFIED TEST PIT LOCATIONS AS DENOTED ON THE PLANS AND SHALL NOT BE LIMITED TO EXCAVATION SOLELY BUT INCLUDE ANY ADDITIONAL MEANS TO DETERMINING THE LOCATION OF UTILITIES IN QUESTION.

CALL BEFORE YOU DIG
1-800-272-1000

TO LOCATE UNDERGROUND UTILITIES
IF YOU'RE GOING TO DIG, BLAST OR DRILL
THREE (3) WORKING DAYS NOTICE

REMEMBER
IT'S THE LAW!
Dig Safely.

No.	REVISION	APPROVE	DATE
1	ISSUED FOR SUBMITTAL		7/27/2025
2	REVISED PER NJDOT COMMENTS		9/8/2025
3	REVISED PER NJDOT COMMENTS		10/24/2025
4	REVISED PER NJDOT COMMENTS		10/29/2025
5			
6			
7			
8			
9			

SCALE: 1" = 1000'

SCALE IN FEET

JAMES M DEYERLE, PE
NJ LICENSE #24GE06090400

Mastec
Professional Services

450 DAVIS DRIVE, PLYMOUTH MEETING, PA 19462
OFFICE NUMBER: 484-344-2161

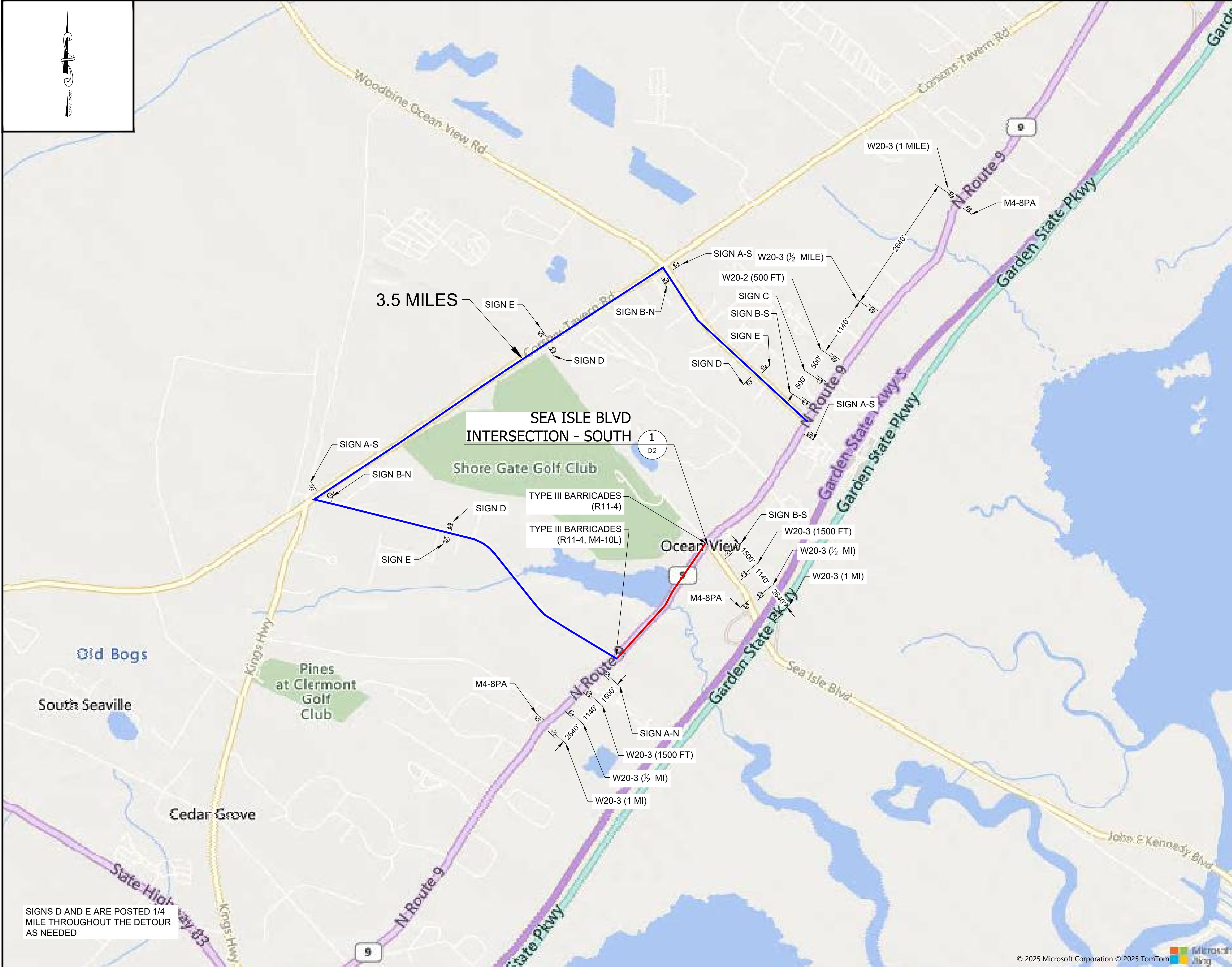
SOUTH JERSEY GAS
1 SOUTH JERSEY PLACE, ATLANTIC CITY, NJ 08401
TELEPHONE: (800) 581-9000 FAX: 800-852-2371

PROPOSED 12" STEEL GAS TRANSMISSION LINE
PERMIT DRAWINGS
CAPE MAY DIVISION

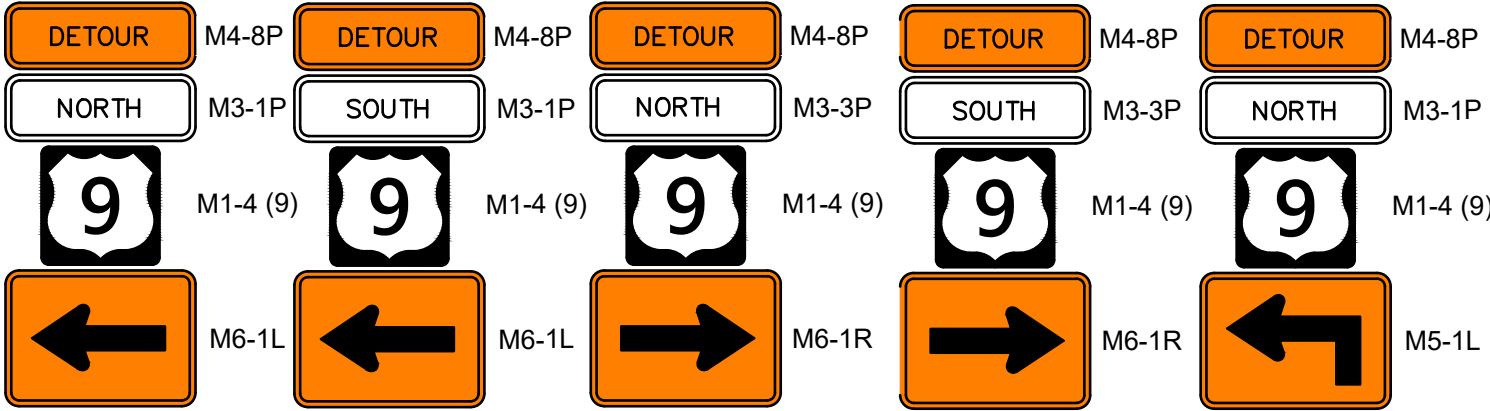
CAPE MAY LATERAL REPLACEMENT - PHASE 2
TRAFFIC CONTROL PLAN

DENNIS TWP	DATE	10/24/2025	PLATE MAP	MULTIPLE
CHECKED BY	RA	SCALE	1" = 1000'	WORK ORDER
APPROVED BY	JD	SHEET	5 OF 14	SHEET NUMBER

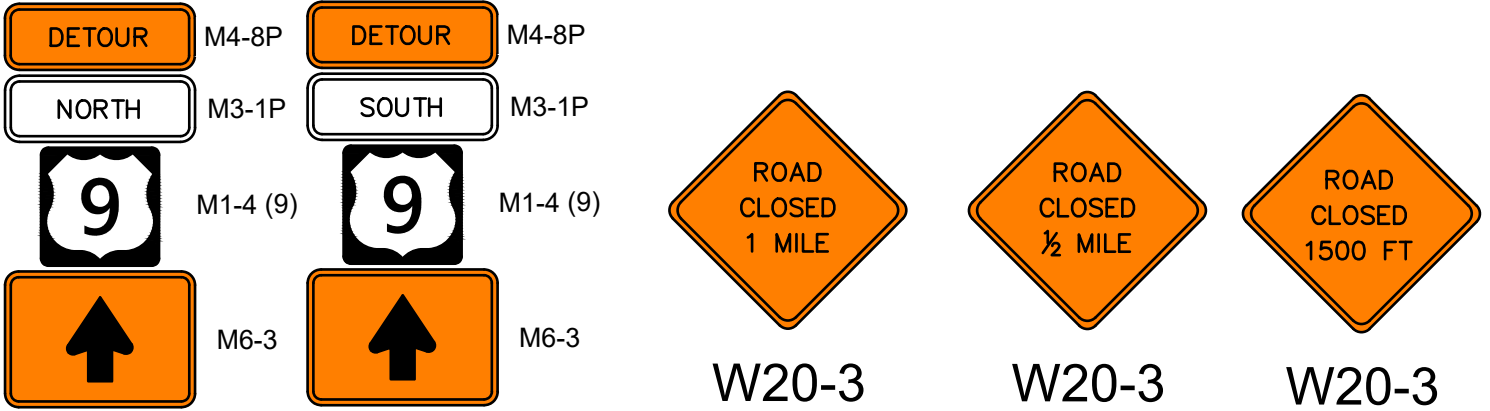
TCP-1



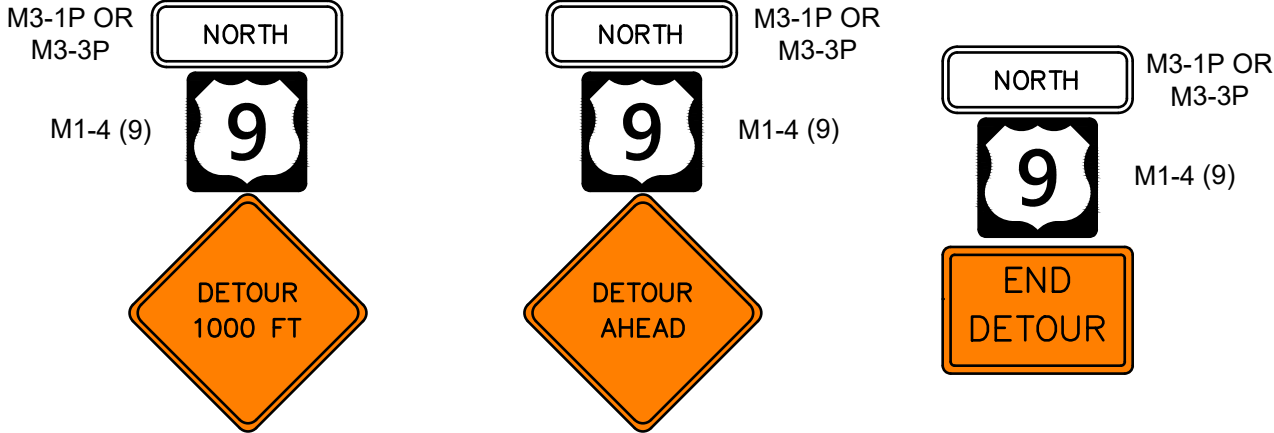
ROAD CLOSURE
DETOUR



SIGN A-N SIGN A-S SIGN B-N SIGN B-S SIGN C



SIGN D SIGN E



W20-2 W20-2 M4-8PA

CONSTRUCTION SIGN TABLE

SIGN DESIGNATION	REQUIRED QUANTITY
M4-8P	8
M1-4	8
M6-1	8
M5-1R	1
W20-3	6
W20-2	1
M4-8PA	2
R11-4	2
M4-10L	1
M4-10R	1
CONSTRUCTION SIGN TOTALS	38

NOTE TO CONTRACTOR:
BEFORE PERFORMING ANY WORK, THE CONTRACTOR SHALL CONTACT THE "DIG NUMBER" (PHONE 800-272-1000) FOR A MARK-OUT OF ALL UNDERGROUND UTILITIES. IT IS THE RESPONSIBILITY OF THE CONTRACTOR TO CONTACT THE "DIG NUMBER" AND TO ASCERTAIN THE LOCATION OF ALL UNDERGROUND CONSTRUCTION IN THE AREA OF THE PROJECT.

THE CONTRACTOR SHALL CONDUCT TEST PITS TO VERIFY THE LOCATIONS OF UNDERGROUND UTILITIES WHERE POTENTIAL CONFLICTS MAY OCCUR OR WHERE DISCREPANCIES ARE PRESENT BETWEEN THE PLAN AND UNDERGROUND UTILITY MARK-OUTS.

THESE TEST PITS SHALL BE IN ADDITION TO THE SPECIFIED TEST PIT LOCATIONS AS DENOTED ON THE PLANS AND SHALL NOT BE LIMITED TO EXCAVATION SOLELY BUT INCLUDE ANY ADDITIONAL MEANS TO DETERMINING THE LOCATION OF UTILITIES IN QUESTION.

CALL BEFORE YOU DIG
1-800-272-1000

TO LOCATE UNDERGROUND UTILITIES
IF YOU'RE GOING TO DIG, BLAST OR DRILL
THREE (3) WORKING DAYS NOTICE

REMEMBER
IT'S THE LAW!
Dig Safely.

No.	REVISION	APPROVE	DATE
1	ISSUED FOR SUBMITTAL		7/27/2025
2	REVISED PER NJDOT COMMENTS		9/8/2025
3	REVISED PER NJDOT COMMENTS		10/24/2025
4	REVISED PER NJDOT COMMENTS		10/29/2025
5			
6			
7			
8			
9			

SCALE: 1" = 1000'

JAMES M DEYERLE, PE
NJ LICENSE #24GE06090400

Professional Services

450 DAVIS DRIVE, PLYMOUTH MEETING, PA 19462
OFFICE NUMBER: 484-344-2161

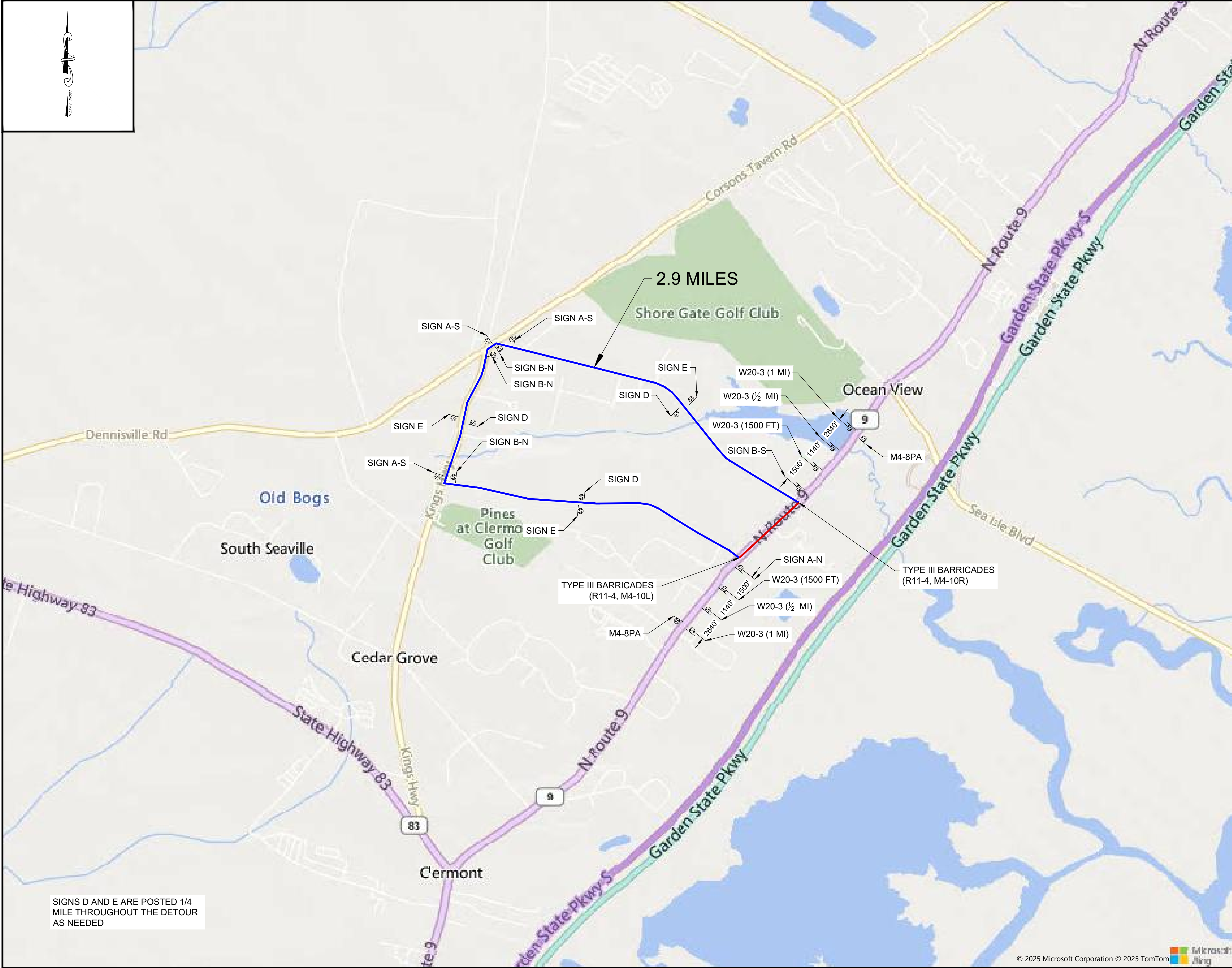
1 SOUTH JERSEY PLACE, ATLANTIC CITY, NJ 08401
TELEPHONE: (800) 581-9000 FAX: 800-852-2371

PROPOSED 12" STEEL GAS TRANSMISSION LINE
PERMIT DRAWINGS
CAPE MAY DIVISION

CAPE MAY LATERAL REPLACEMENT - PHASE 2
TRAFFIC CONTROL PLAN

DENNIS TWP	DATE	10/24/2025	PLATE MAP	MULTIPLE
CHECKED BY	RA	SCALE	1" = 1000'	WORK ORDER
APPROVED BY	JD	SHEET	6 OF 14	SHEET NUMBER

TCP-2



ROAD CLOSURE

DETOUR

DETOUR

NORTH

M6-1L

DETOUR

SOUTH

M6-1L

DETOUR

NORTH

M6-1R

DETOUR

SOUTH

M6-1R

DETOUR

NORTH

M5-1L

SIGN A-N

SIGN A-S

SIGN B-N

SIGN B-S

SIGN C

DETOUR

NORTH

M6-3

DETOUR

SOUTH

M6-3

ROAD CLOSED

1 MILE

W20-3

ROAD CLOSED

1/2 MILE

W20-3

ROAD CLOSED

1500 FT

W20-3

SIGN D

SIGN E

M3-1P OR M3-3P

NORTH

M1-4 (9)

DETOUR

1000 FT

W20-2

NORTH

M1-4 (9)

DETOUR

AHEAD

W20-2

NORTH

M1-4 (9)

END

DETOUR

M4-8PA

CONSTRUCTION SIGN TABLE	
SIGN DESIGNATION	REQUIRED QUANTITY
M4-8P	8
M1-4	8
M6-1	8
W20-3	6
M4-8PA	2
R11-4	2
M4-10L	1
M4-10R	1
CONSTRUCTION SIGN TOTALS	36

NOTE TO CONTRACTOR:
BEFORE PERFORMING ANY WORK, THE CONTRACTOR SHALL CONTACT THE "DIG NUMBER" (PHONE 800-272-1000) FOR A MARK-OUT OF ALL UNDERGROUND UTILITIES. IT IS THE RESPONSIBILITY OF THE CONTRACTOR TO CONTACT THE "DIG NUMBER" AND TO ASCERTAIN THE LOCATION OF ALL UNDERGROUND CONSTRUCTION IN THE AREA OF THE PROJECT.

THE CONTRACTOR SHALL CONDUCT TEST PITS TO VERIFY THE LOCATIONS OF UNDERGROUND UTILITIES WHERE POTENTIAL CONFLICTS MAY OCCUR OR WHERE DISCREPANCIES ARE PRESENT BETWEEN THE PLAN AND UNDERGROUND UTILITY MARK-OUTS.

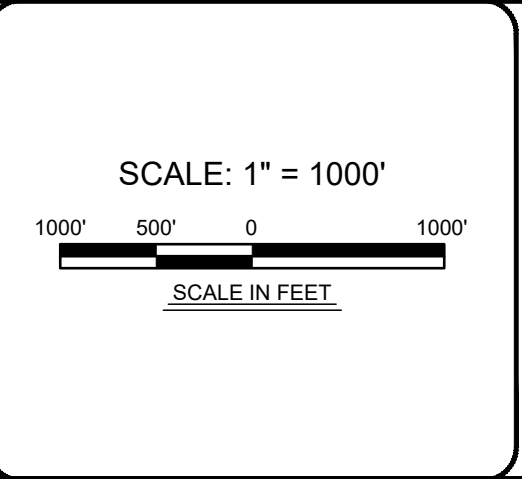
THESE TEST PITS SHALL BE IN ADDITION TO THE SPECIFIED TEST PIT LOCATIONS AS DENOTED ON THE PLANS AND SHALL NOT BE LIMITED TO EXCAVATION SOLELY BUT INCLUDE ANY ADDITIONAL MEANS TO DETERMINING THE LOCATION OF UTILITIES IN QUESTION.

CALL BEFORE YOU DIG
1-800-272-1000

TO LOCATE UNDERGROUND UTILITIES
IF YOU'RE GOING TO DIG, BLAST OR DRILL
THREE (3) WORKING DAYS NOTICE

REMEMBER
IT'S THE LAW!
Dig Safely.

No.	REVISION	APPROVE	DATE
1	ISSUED FOR SUBMITTAL		7/27/2025
2	REVISED PER NJDOT COMMENTS		9/8/2025
3	REVISED PER NJDOT COMMENTS		10/24/2025
4	REVISED PER NJDOT COMMENTS		10/29/2025
5			
6			
7			
8			
9			



JAMES M DEYERLE, PE
NJ LICENSE #24GE06090400

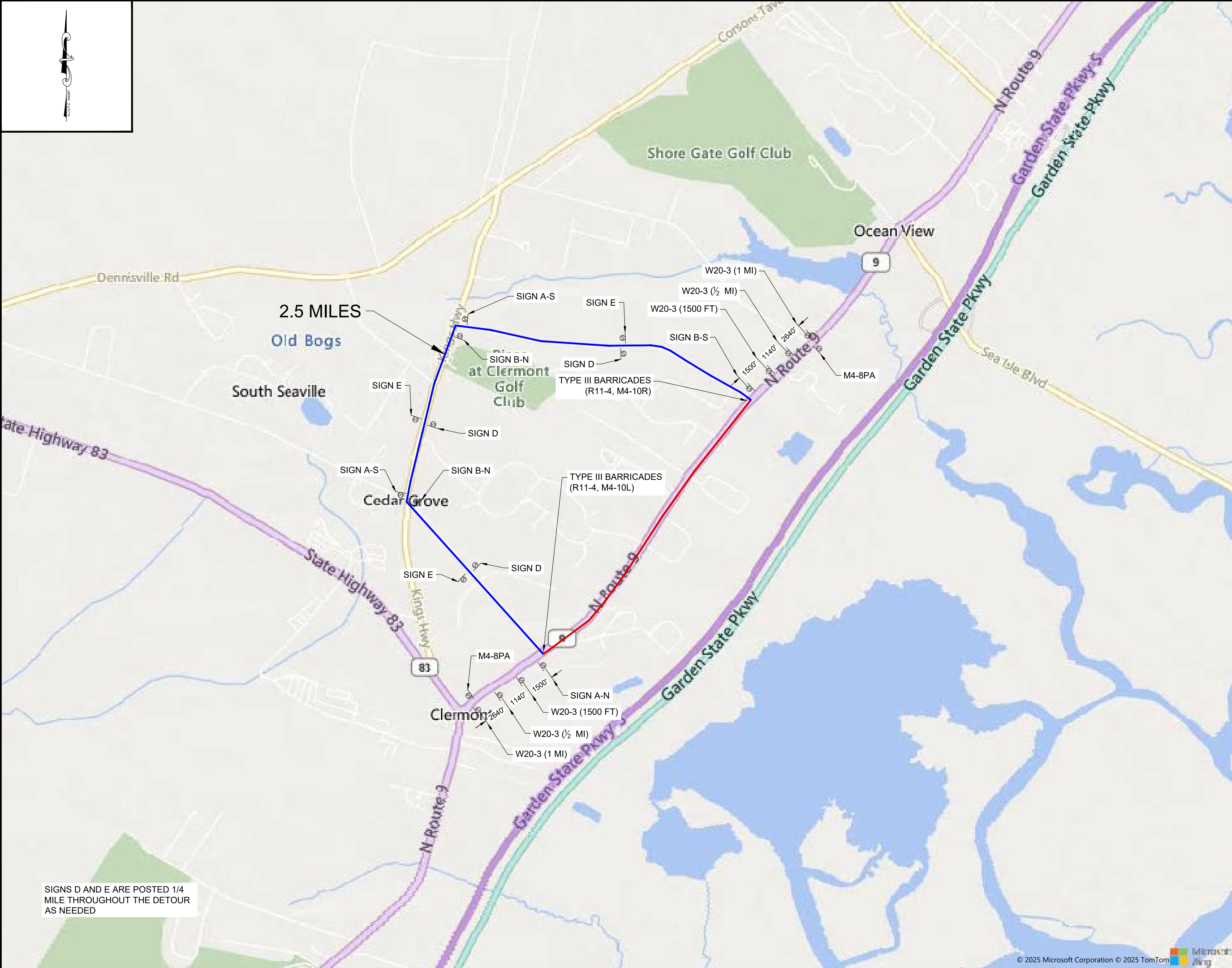
Professional Services

450 DAVIS DRIVE, PLYMOUTH MEETING, PA 19462
OFFICE NUMBER: 484-344-2161

1 SOUTH JERSEY PLACE, ATLANTIC CITY, NJ 08401
TELEPHONE: (800) 581-9000 FAX: 800-852-2371

PROPOSED 12" STEEL GAS TRANSMISSION LINE
PERMIT DRAWINGS
CAPE MAY LATERAL REPLACEMENT - PHASE 2
TRAFFIC CONTROL PLAN

DENNIS TWP	DATE	10/24/2025	PLATE MAP	MULTIPLE
CHECKED BY	RA	SCALE	1" = 1000'	WORK ORDER
APPROVED BY	JD	SHEET	6 OF 14	SHEET NUMBER
				TCP-3



ROAD CLOSURE
DETOUR

Signage for Northbound and Southbound lanes, including directional arrows and route markers (M4-8P, M3-1P, M1-4, M6-1L, M6-1R, M5-1L).

Signage for detour routes, including 'ROAD CLOSED' signs and distance markers (W20-3, W20-3, W20-3).

Signage for detour routes, including 'DETOUR' signs and distance markers (W20-2, W20-2, M4-8PA).

CONSTRUCTION SIGN TABLE	
SIGN DESIGNATION	REQUIRED QUANTITY
M4-8P	6
M1-4	6
M6-1	6
W20-3	6
M4-8PA	2
R11-4	2
M4-10L	1
M4-10R	1
CONSTRUCTION SIGN TOTALS	30

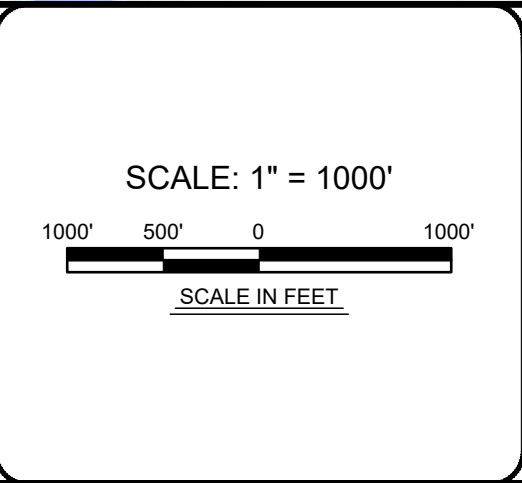
NOTE TO CONTRACTOR:
BEFORE PERFORMING ANY WORK, THE CONTRACTOR SHALL CONTACT THE "DIG NUMBER" (PHONE 800-272-1000) FOR A MARK-OUT OF ALL UNDERGROUND UTILITIES. IT IS THE RESPONSIBILITY OF THE CONTRACTOR TO CONTACT THE "DIG NUMBER" AND TO ASCERTAIN THE LOCATION OF ALL UNDERGROUND CONSTRUCTION IN THE AREA OF THE PROJECT.

THE CONTRACTOR SHALL CONDUCT TEST PITS TO VERIFY THE LOCATIONS OF UNDERGROUND UTILITIES WHERE POTENTIAL CONFLICTS MAY OCCUR OR WHERE DISCREPANCIES ARE PRESENT BETWEEN THE PLAN AND UNDERGROUND UTILITY MARK-OUTS.

THESE TEST PITS SHALL BE IN ADDITION TO THE SPECIFIED TEST PIT LOCATIONS AS DENOTED ON THE PLANS AND SHALL NOT BE LIMITED TO EXCAVATION SOLELY BUT INCLUDE ANY ADDITIONAL MEANS TO DETERMINING THE LOCATION OF UTILITIES IN QUESTION.

ONE CALL logo and text: CALL BEFORE YOU DIG 1-800-272-1000. IT'S THE LAW! Dig Safely.

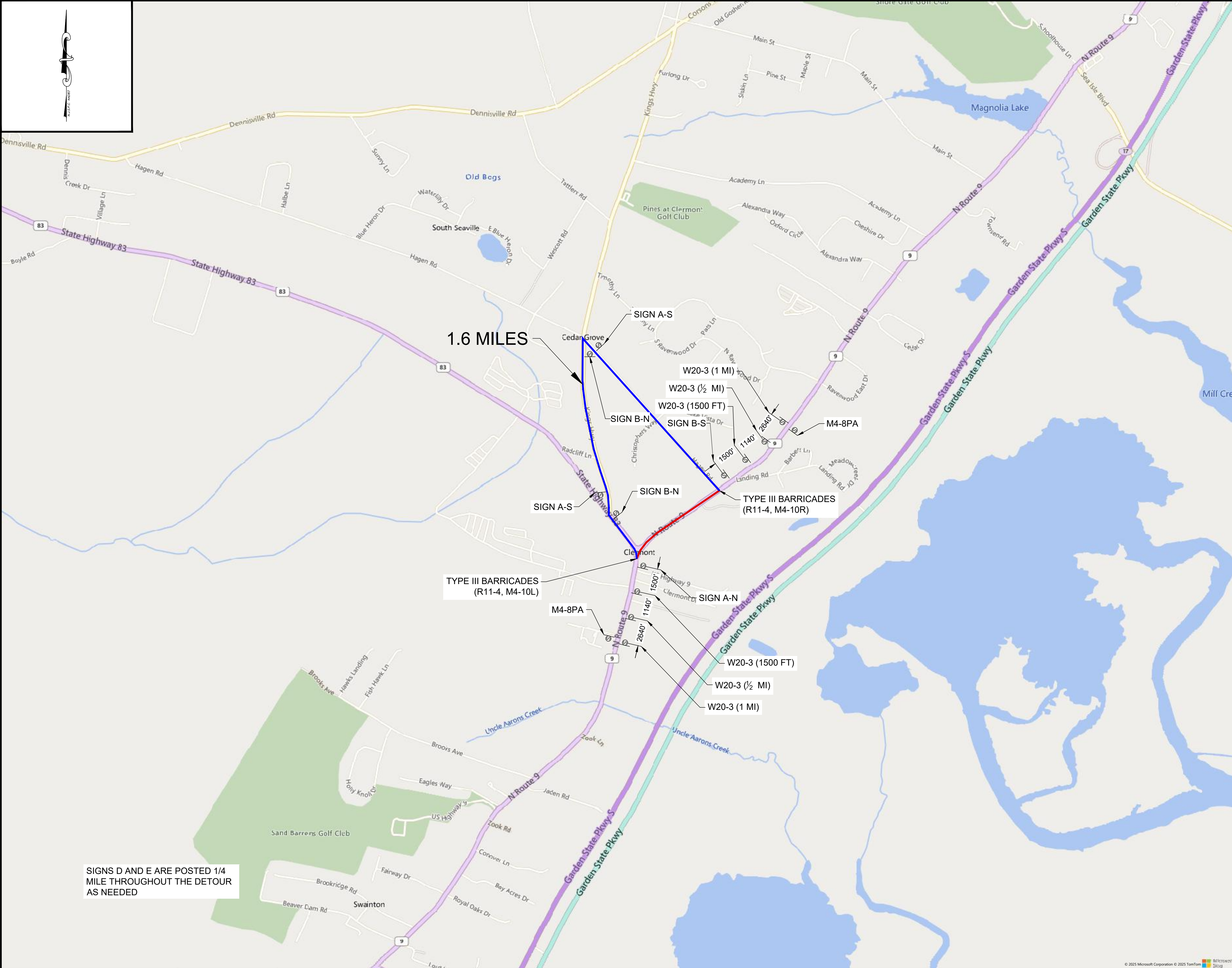
No.	REVISION	APPROVE	DATE
1	ISSUED FOR SUBMITTAL		7/27/2025
2	REVISED PER NJDOT COMMENTS		9/8/2025
3	REVISED PER NJDOT COMMENTS		10/24/2025
4	REVISED PER NJDOT COMMENTS		10/29/2025
5			
6			
7			
8			
9			



JAMES M DEYERLE, PE
NJ LICENSE #24GE06090400

MasTec Professional Services logo and address: 450 DAVIS DRIVE, PLYMOUTH MEETING, PA 19462. OFFICE NUMBER: 484-344-2161

SOUTH JERSEY GAS logo and project information: PROPOSED 12" STEEL GAS TRANSMISSION LINE PERMIT DRAWINGS CAPE MAY DIVISION. CAPE MAY LATERAL REPLACEMENT - PHASE 2 TRAFFIC CONTROL PLAN. DENNIS TWP. NEW JERSEY.



ROAD CLOSURE
DETOUR

Signs A-N, A-S, B-N, B-S, and C. Each sign set includes a detour sign, a north/south arrow sign, and a route sign (M1-4, M3-1P, M4-8P, M5-1L, M6-1L, M6-1R, M6-3).

Signs D and E. Sign D includes a north arrow sign and a route sign (M1-4, M3-1P, M4-8P, M6-3). Sign E includes a north arrow sign and a route sign (M1-4, M3-1P, M4-8P, M6-3). W20-3 signs are also shown.

Signs W20-2, W20-3, and M4-8PA. W20-2 includes a north arrow sign and a route sign (M1-4, M3-1P, M4-8P, M6-3). W20-3 includes a north arrow sign and a route sign (M1-4, M3-1P, M4-8P, M6-3). M4-8PA includes a north arrow sign and a route sign (M1-4, M3-1P, M4-8P, M6-3).

CONSTRUCTION SIGN TABLE	
SIGN DESIGNATION	REQUIRED QUANTITY
M4-8P	6
M1-4	6
M6-1	6
W20-3	6
M4-8PA	2
R11-4	2
M4-10L	1
M4-10R	1
CONSTRUCTION SIGN TOTALS	30

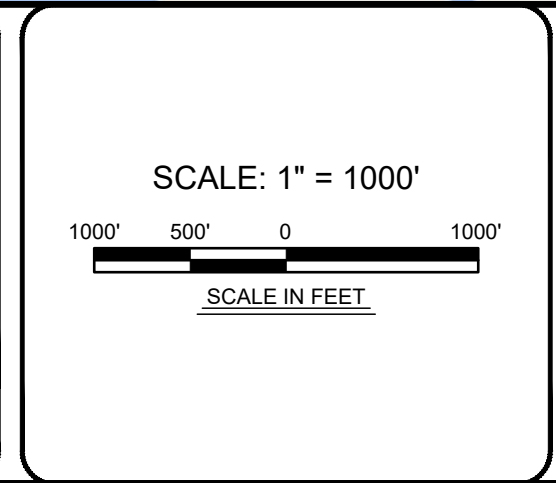
NOTE TO CONTRACTOR:
BEFORE PERFORMING ANY WORK, THE CONTRACTOR SHALL CONTACT THE "DIG NUMBER" (PHONE 800-272-1000) FOR A MARK-OUT OF ALL UNDERGROUND UTILITIES. IT IS THE RESPONSIBILITY OF THE CONTRACTOR TO CONTACT THE "DIG NUMBER" AND TO ASCERTAIN THE LOCATION OF ALL UNDERGROUND CONSTRUCTION IN THE AREA OF THE PROJECT.

THE CONTRACTOR SHALL CONDUCT TEST PITS TO VERIFY THE LOCATIONS OF UNDERGROUND UTILITIES WHERE POTENTIAL CONFLICTS MAY OCCUR OR WHERE DISCREPANCIES ARE PRESENT BETWEEN THE PLAN AND UNDERGROUND UTILITY MARK-OUTS.

THESE TEST PITS SHALL BE IN ADDITION TO THE SPECIFIED TEST PIT LOCATIONS AS DENOTED ON THE PLANS AND SHALL NOT BE LIMITED TO EXCAVATION SOLELY BUT INCLUDE ANY ADDITIONAL MEANS TO DETERMINING THE LOCATION OF UTILITIES IN QUESTION.

ONE CALL
CALL BEFORE YOU DIG
1-800-272-1000
TO LOCATE UNDERGROUND UTILITIES
IF YOU'RE GOING TO DIG, BLAST OR DRILL
THREE (3) WORKING DAYS NOTICE
REMEMBER
IT'S THE LAW!
Dig Safely.

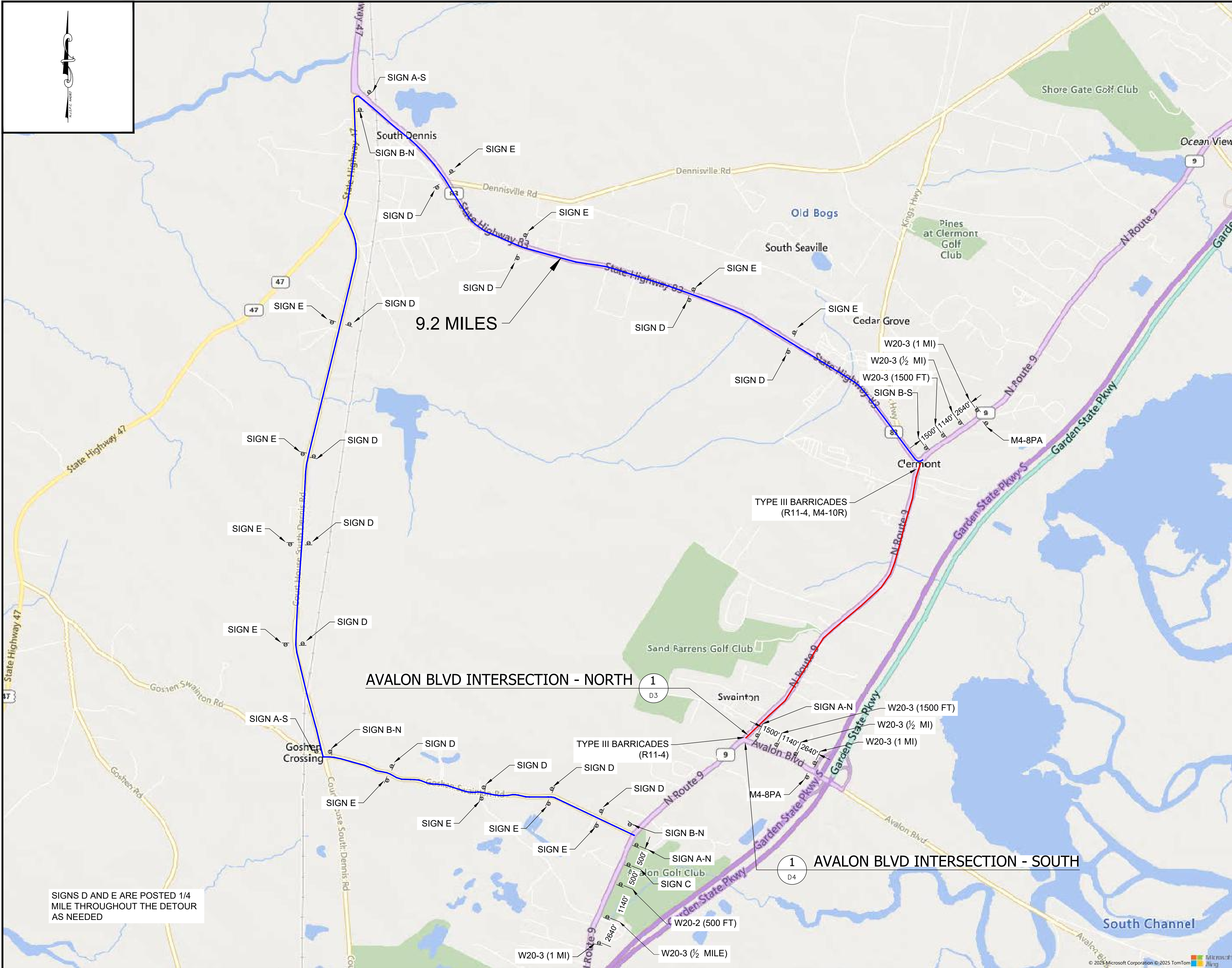
No.	REVISION	APPROVE	DATE
1	ISSUED FOR SUBMITTAL		7/27/2025
2	REVISED PER NJDOT COMMENTS		9/8/2025
3	REVISED PER NJDOT COMMENTS		10/24/2025
4	REVISED PER NJDOT COMMENTS		10/29/2025
5			
6			
7			
8			
9			



JAMES M DEYERLE, PE
NJ LICENSE #24GE06090400

MasTec
Professional Services
450 DAVIS DRIVE, PLYMOUTH MEETING, PA 19462
OFFICE NUMBER: 484-344-2161

SOUTH JERSEY GAS
1 SOUTH JERSEY PLACE, ATLANTIC CITY, NJ 08401
TELEPHONE: (800) 581-9000 FAX: 800-852-2371
PROPOSED 12" STEEL GAS TRANSMISSION LINE
PERMIT DRAWINGS
CAPE MAY DIVISION
CAPE MAY LATERAL REPLACEMENT - PHASE 2
TRAFFIC CONTROL PLAN
CAPE MAY
NEW JERSEY
DENNIS TWP
DRAWN BY DT DATE 10/24/2025 PLATE MAP MULTIPLE
CHECKED BY RA SCALE 1" = 1000' WORK ORDER 5436482
APPROVED BY JD SHEET g OF 14 SHEET NUMBER TCP-5



ROAD CLOSURE

DETOUR

DETOUR

M4-8P

NORTH

M3-1P

M1-4 (9)

M6-1L

SIGN A-N

DETOUR

M4-8P

SOUTH

M3-1P

M1-4 (9)

M6-1L

SIGN A-S

DETOUR

M4-8P

NORTH

M3-3P

M1-4 (9)

M6-1R

SIGN B-N

DETOUR

M4-8P

SOUTH

M3-3P

M1-4 (9)

M6-1R

SIGN B-S

DETOUR

M4-8P

NORTH

M3-1P

M1-4 (9)

M5-1L

SIGN C

DETOUR

M4-8P

NORTH

M3-1P

M1-4 (9)

M6-3

SIGN D

DETOUR

M4-8P

SOUTH

M3-1P

M1-4 (9)

M6-3

SIGN E

ROAD CLOSED

1 MILE

W20-3

ROAD CLOSED

½ MILE

W20-3

ROAD CLOSED

1500 FT

W20-3

M3-1P OR M3-3P

NORTH

M1-4 (9)

DETOUR

1000 FT

W20-2

NORTH

M3-1P OR M3-3P

M1-4 (9)

DETOUR

AHEAD

W20-2

NORTH

M3-1P OR M3-3P

M1-4 (9)

END

DETOUR

M4-8PA

CONSTRUCTION SIGN TABLE	
SIGN DESIGNATION	REQUIRED QUANTITY
M4-8P	8
M1-4	8
M6-1	8
W20-3	6
M4-8PA	2
R11-4	2
M4-10L	1
M4-10R	1
CONSTRUCTION SIGN TOTALS	36

NOTE TO CONTRACTOR:
BEFORE PERFORMING ANY WORK, THE CONTRACTOR SHALL CONTACT THE "DIG NUMBER" (PHONE 800-272-1000) FOR A MARK-OUT OF ALL UNDERGROUND UTILITIES. IT IS THE RESPONSIBILITY OF THE CONTRACTOR TO CONTACT THE "DIG NUMBER" AND TO ASCERTAIN THE LOCATION OF ALL UNDERGROUND CONSTRUCTION IN THE AREA OF THE PROJECT.

THE CONTRACTOR SHALL CONDUCT TEST PITS TO VERIFY THE LOCATIONS OF UNDERGROUND UTILITIES WHERE POTENTIAL CONFLICTS MAY OCCUR OR WHERE DISCREPANCIES ARE PRESENT BETWEEN THE PLAN AND UNDERGROUND UTILITY MARK-OUTS.

THESE TEST PITS SHALL BE IN ADDITION TO THE SPECIFIED TEST PIT LOCATIONS AS DENOTED ON THE PLANS AND SHALL NOT BE LIMITED TO EXCAVATION SOLELY BUT INCLUDE ANY ADDITIONAL MEANS TO DETERMINING THE LOCATION OF UTILITIES IN QUESTION.

ONE CALL

CALL BEFORE YOU DIG
1-800-272-1000
TO LOCATE UNDERGROUND UTILITIES
IF YOU'RE GOING TO DIG, BLAST OR DRILL
THREE (3) WORKING DAYS NOTICE

REMEMBER
IT'S THE LAW!
Dig Safely.

No.	REVISION	APPROVE	DATE
1	ISSUED FOR SUBMITTAL		7/27/2025
2	REVISED PER NJDOT COMMENTS		9/8/2025
3	REVISED PER NJDOT COMMENTS		10/24/2025
4	REVISED PER NJDOT COMMENTS		10/29/2025
5			
6			
7			
8			
9			

JAMES M DEYERLE, PE
NJ LICENSE #24GE06090400

MasTec

Professional Services

450 DAVIS DRIVE, PLYMOUTH MEETING, PA 19462
OFFICE NUMBER: 484-344-2161

SOUTH JERSEY GAS

1 SOUTH JERSEY PLACE, ATLANTIC CITY, NJ 08401
TELEPHONE: (800) 581-9000 FAX: 800-852-2371

PROPOSED 12" STEEL GAS TRANSMISSION LINE
PERMIT DRAWINGS
CAPE MAY DIVISION

CAPE MAY LATERAL REPLACEMENT - PHASE 2
TRAFFIC CONTROL PLAN

DENNIS & MIDDLE TWP

CAPE MAY

NEW JERSEY

DRAWN BY
DT

DATE
10/24/2025

PLATE MAP
MULTIPLE

CHECKED BY
RA

SCALE
1" = 1500'

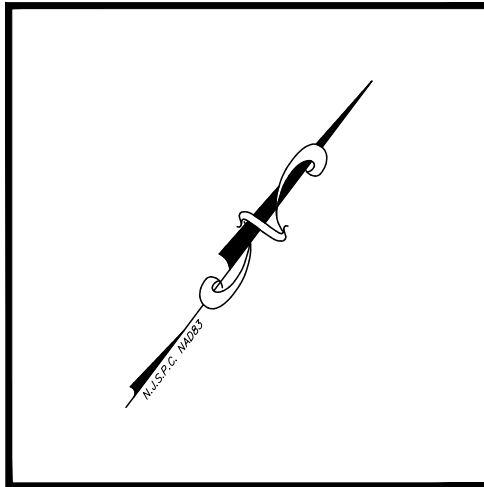
WORK ORDER
5436482

APPROVED BY
JD



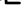




SHEET
10

OF
14

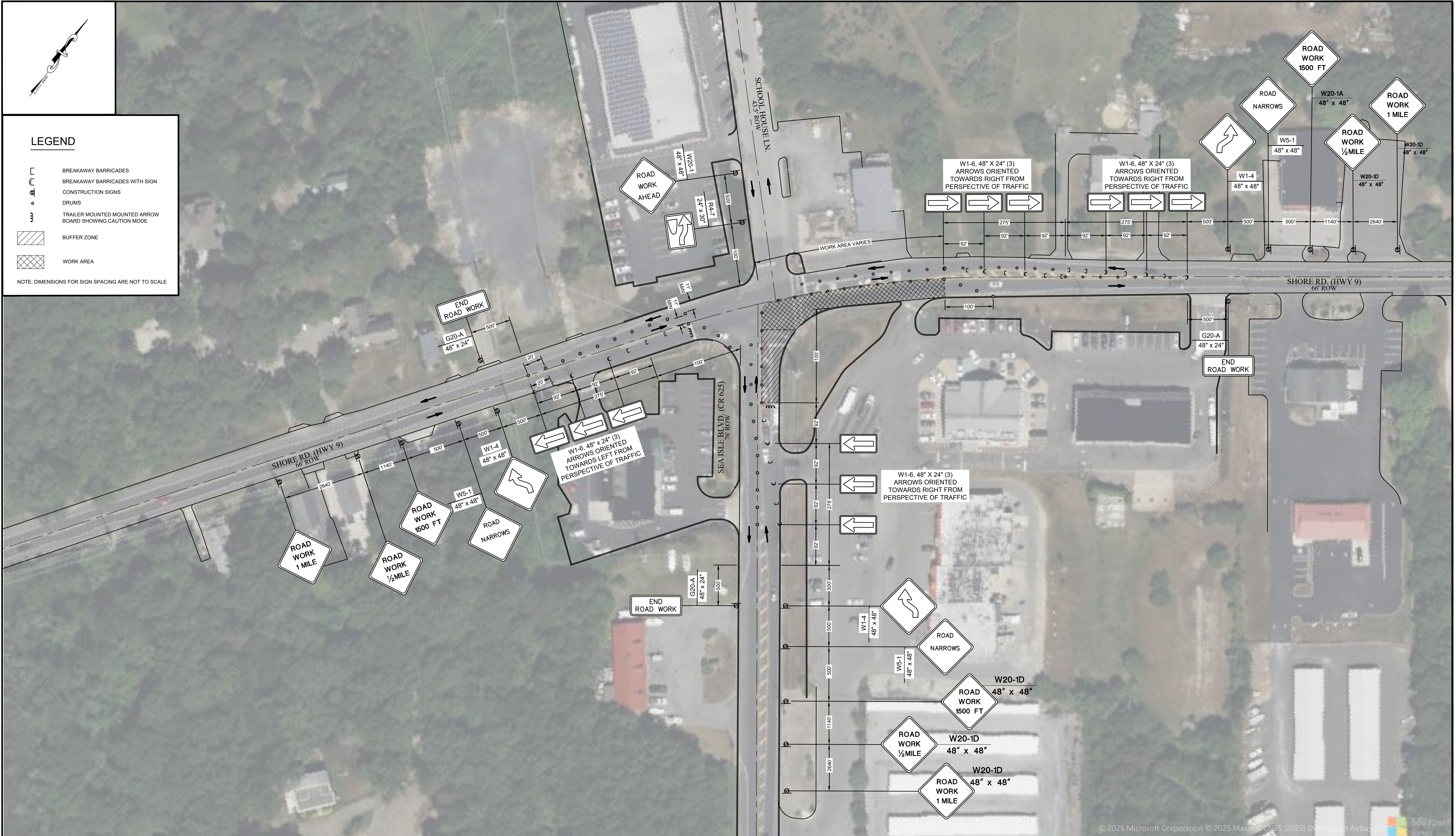
SHEET NUMBER
TCP-6



LEGEND

- | | |
|---|--|
|  | BREAKAWAY BARRICADES |
|  | BREAKAWAY BARRICADES WITH SIGN |
|  | CONSTRUCTION SIGNS |
|  | DRUMS |
|  | TRAILER MOUNTED MOUNTED ARROW BOARD SHOWING CAUTION MODE |
|  | BUFFER ZONE |
|  | WORK AREA |

NOTE: DIMENSIONS FOR SIGN SPACING ARE NOT TO SCALE



© 2025 Microsoft Corporation © 2025 Maxar © CNES (2025) Distribution Airbus DS

NOTE TO CONTRACTOR:
BEFORE PERFORMING ANY WORK, THE CONTRACTOR SHALL
CONTACT THE "DIG NUMBER" (PHONE 800-272-1000).
FOR A MARK-OUT OF ALL UNDERGROUND UTILITIES. IT IS
THE RESPONSIBILITY OF THE CONTRACTOR TO CONTACT THE
"DIG NUMBER" AND TO ASCERTAIN THE LOCATION OF ALL
UNDERGROUND CONSTRUCTION IN THE AREA OF THE PROJECT.



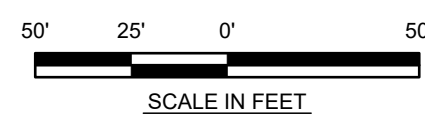
CALL BEFORE YOU DIG

TO LOCATE UNDERGROUND UTILITIES
IF YOU'RE GOING TO DIG, BLAST OR DRILL
THREE (3) WORKING DAYS NOTICE

REMEMBER
IT'S THE LAW!
Dig Safely.

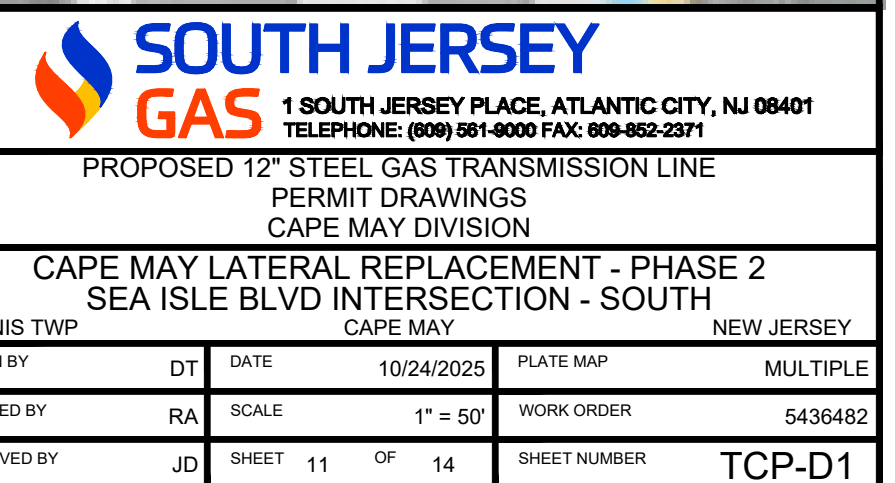
No.	REVISION	APPROVE	DATE
1	ISSUED FOR SUBMITTAL		7/27/2025
2	REVISED PER NJDOT COMMENTS		9/8/2025
3	REVISED PER NJDOT COMMENTS		10/24/2025
4	REVISED PER NJDOT COMMENTS		10/29/2025
5			
6			
7			
8			
9			

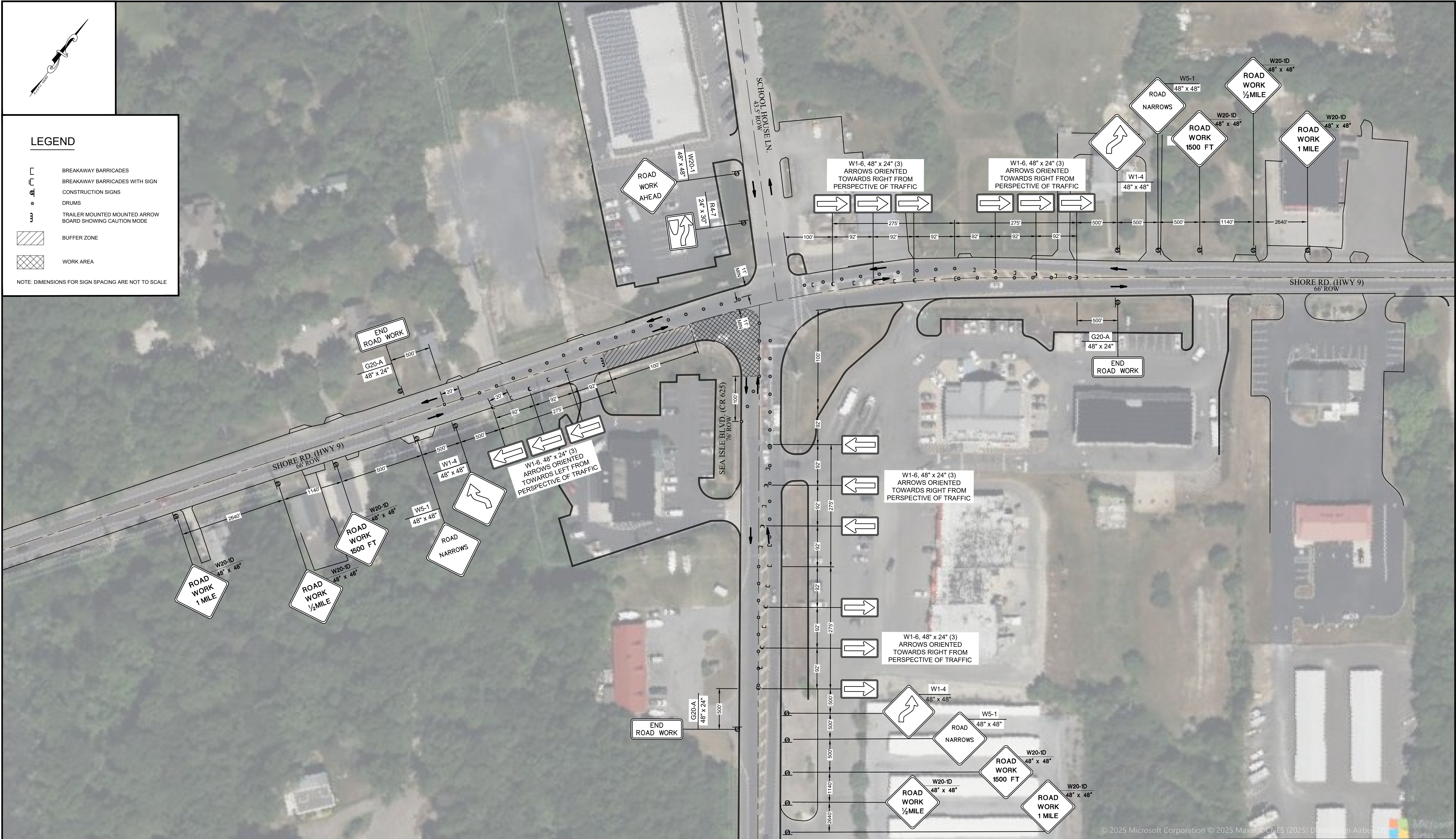
SCALE: 1" = 50'



JAMES M DEYERLE, PE
NJ LICENSE #24GE06090400

MasTec
Professional Services
450 DAVIS DRIVE, PLYMOUTH MEETING, PA 19462
OFFICE NUMBER: 484-344-2161





LEGEND

BREAKAWAY BARRICADES

BREAKAWAY BARRICADES WITH SIGN

CONSTRUCTION SIGNS

DRUMS

TRAILER MOUNTED MOUNTED ARROW BOARD SHOWING CAUTION MODE

BUFFER ZONE

WORK AREA

NOTE: DIMENSIONS FOR SIGN SPACING ARE NOT TO SCALE

NOTE TO CONTRACTOR:
BEFORE PERFORMING ANY WORK, THE CONTRACTOR SHALL CONTACT THE "DIG NUMBER" (PHONE 800-272-1000) FOR A MARK-OUT OF ALL UNDERGROUND UTILITIES. IT IS THE RESPONSIBILITY OF THE CONTRACTOR TO CONTACT THE "DIG NUMBER" AND TO ASCERTAIN THE LOCATION OF ALL UNDERGROUND CONSTRUCTION IN THE AREA OF THE PROJECT.

THE CONTRACTOR SHALL CONDUCT TEST PITS TO VERIFY THE LOCATIONS OF UNDERGROUND UTILITIES WHERE POTENTIAL CONFLICTS MAY OCCUR OR WHERE DISCREPANCIES ARE PRESENT BETWEEN THE PLAN AND UNDERGROUND UTILITY MARK-OUTS.

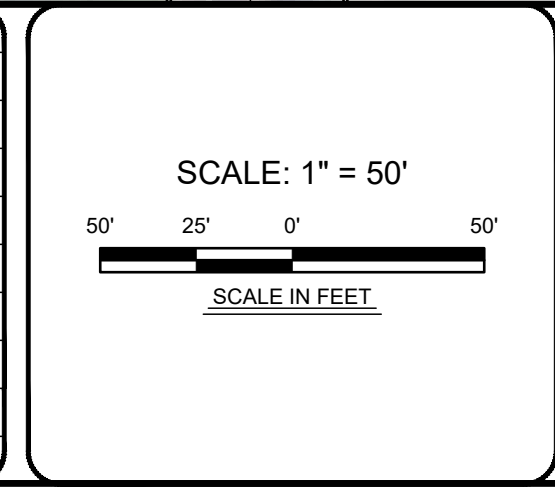
THESE TEST PITS SHALL BE IN ADDITION TO THE SPECIFIED TEST PIT LOCATIONS AS DENOTED ON THE PLANS AND SHALL NOT BE LIMITED TO EXCAVATION SOLELY BUT INCLUDE ANY ADDITIONAL MEANS TO DETERMINING THE LOCATION OF UTILITIES IN QUESTION.

ONE CALL

CALL BEFORE YOU DIG
1-800-272-1000
TO LOCATE UNDERGROUND UTILITIES
IF YOU'RE GOING TO DIG, BLAST OR DRILL
THREE (3) WORKING DAYS NOTICE

REMEMBER
IT'S THE LAW!
Dig Safely.

No.	REVISION	APPROVE	DATE
1	ISSUED FOR SUBMITTAL		7/27/2025
2	REVISED PER NJDOT COMMENTS		9/8/2025
3	REVISED PER NJDOT COMMENTS		10/24/2025
4	REVISED PER NJDOT COMMENTS		10/29/2025
5			
6			
7			
8			
9			



JAMES M DEYERLE, PE
NJ LICENSE #24GE06090400

MasTec

Professional Services

450 DAVIS DRIVE, PLYMOUTH MEETING, PA 19462
OFFICE NUMBER: 484-344-2161

SOUTH JERSEY GAS

1 SOUTH JERSEY PLACE, ATLANTIC CITY, NJ 08401
TELEPHONE: (800) 581-9000 FAX: 800-852-2371

PROPOSED 12" STEEL GAS TRANSMISSION LINE
PERMIT DRAWINGS
CAPE MAY DIVISION

CAPE MAY LATERAL REPLACEMENT - PHASE 2
SEA ISLE BLVD INTERSECTION - SOUTH

DENNIS TWP

CAPE MAY

NEW JERSEY

DRAWN BY

DATE

10/24/2025

PLATE MAP

MULTIPLE

CHECKED BY

RA

SCALE

1" = 50'

WORK ORDER

5436482

APPROVED BY

JD

SHEET

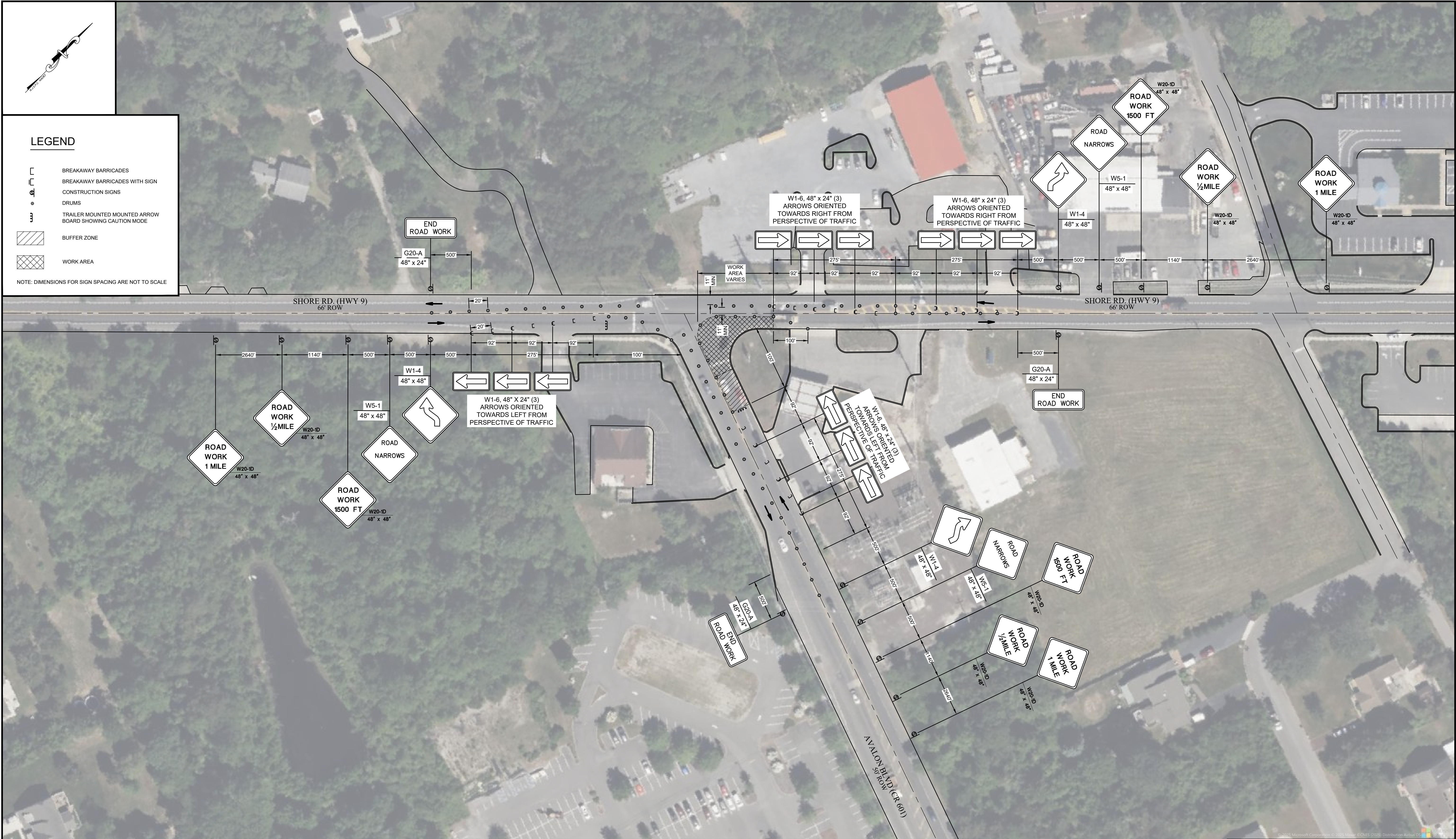
12

OF

14

SHEET NUMBER

TCP-D2



NOTE TO CONTRACTOR:
BEFORE PERFORMING ANY WORK, THE CONTRACTOR SHALL CONTACT THE "DIG NUMBER" (PHONE 800-272-1000) FOR A MARK-OUT OF ALL UNDERGROUND UTILITIES. IT IS THE RESPONSIBILITY OF THE CONTRACTOR TO CONTACT THE "DIG NUMBER" AND TO ASCERTAIN THE LOCATION OF ALL UNDERGROUND CONSTRUCTION IN THE AREA OF THE PROJECT.

THE CONTRACTOR SHALL CONDUCT TEST PITS TO VERIFY THE LOCATIONS OF UNDERGROUND UTILITIES WHERE POTENTIAL CONFLICTS MAY OCCUR OR WHERE DISCREPANCIES ARE PRESENT BETWEEN THE PLAN AND UNDERGROUND UTILITY MARK-OUTS.

THESE TEST PITS SHALL BE IN ADDITION TO THE SPECIFIED TEST PIT LOCATIONS AS DENOTED ON THE PLANS AND SHALL NOT BE LIMITED TO EXCAVATION SOLELY BUT INCLUDE ANY ADDITIONAL MEANS TO DETERMINING THE LOCATION OF UTILITIES IN QUESTION.



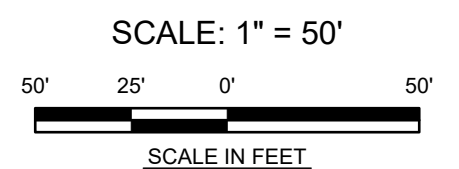
CALL BEFORE YOU DIG
1-800-272-1000

TO LOCATE UNDERGROUND UTILITIES
IF YOU'RE GOING TO DIG, BLAST OR DRILL
THREE (3) WORKING DAYS NOTICE

REMEMBER
IT'S THE LAW!

Dig Safely.

No.	REVISION	APPROVE	DATE
1	ISSUED FOR SUBMITTAL		7/27/2025
2	REVISED PER NJDOT COMMENTS		9/8/2025
3	REVISED PER NJDOT COMMENTS		10/24/2025
4	REVISED PER NJDOT COMMENTS		10/29/2025
5			
6			
7			
8			
9			




JAMES M DEYERLE, PE
NJ LICENSE #24GE06090400



Professional Services

450 DAVIS DRIVE, PLYMOUTH MEETING, PA 19462
OFFICE NUMBER: 484-344-2161



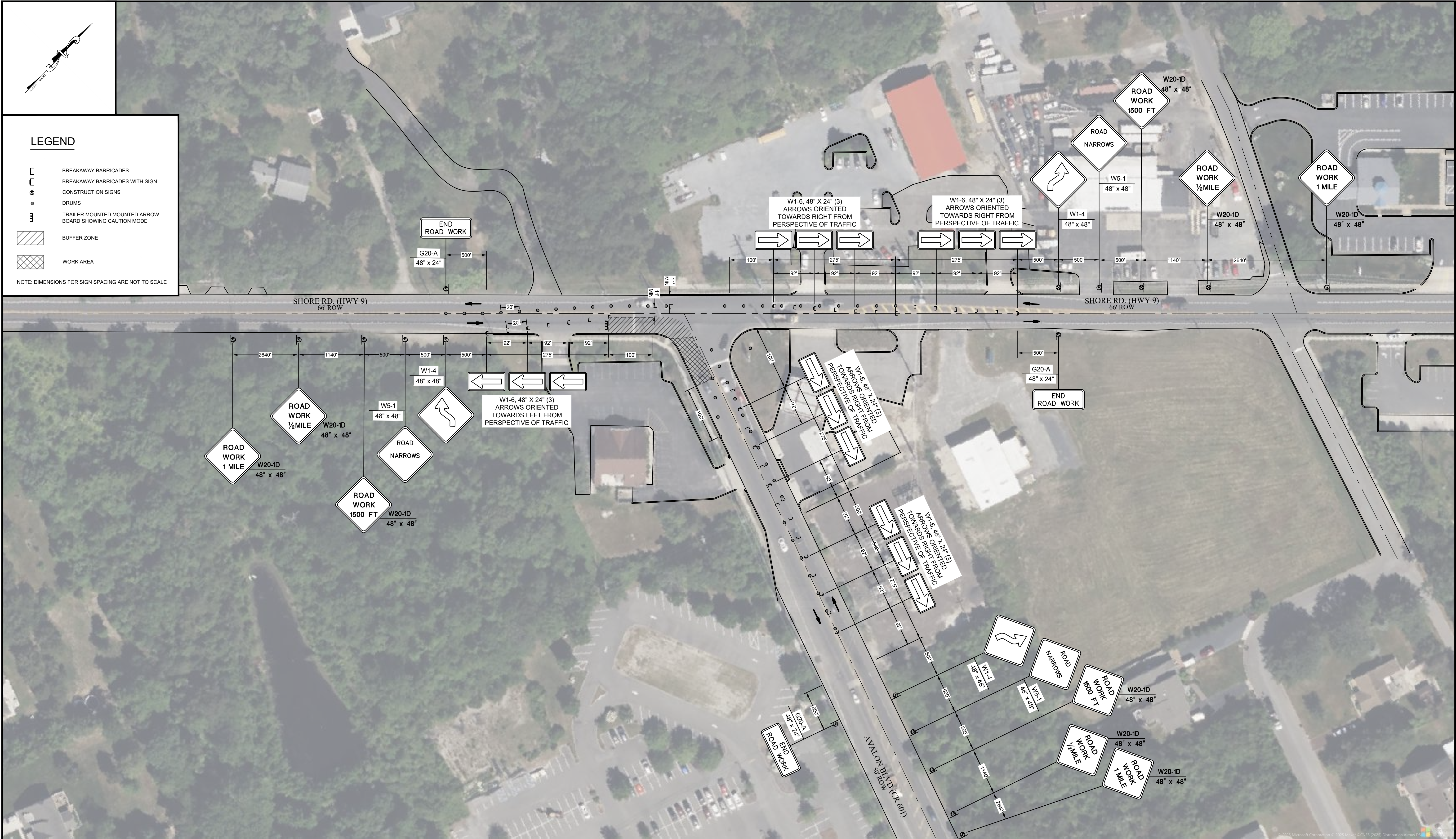
SOUTH JERSEY GAS
1 SOUTH JERSEY PLACE, ATLANTIC CITY, NJ 08401
TELEPHONE: (800) 581-9000 FAX: 800-852-2371

PROPOSED 12" STEEL GAS TRANSMISSION LINE
PERMIT DRAWINGS
CAPE MAY DIVISION

CAPE MAY LATERAL REPLACEMENT - PHASE 2
AVALON BLVD INTERSECTION - NORTH

MIDDLE TWP	CAPE MAY	NEW JERSEY
DRAWN BY	DT	DATE
CHECKED BY	RA	SCALE
APPROVED BY	JD	SHEET

10/24/2025
1" = 50'
13 OF 14
10/24/2025
MULTIPLE
WORK ORDER
5436482
SHEET NUMBER
TCP-D3



NOTE TO CONTRACTOR:
BEFORE PERFORMING ANY WORK, THE CONTRACTOR SHALL CONTACT THE "DIG NUMBER" (PHONE 800-272-1000) FOR A MARK-OUT OF ALL UNDERGROUND UTILITIES. IT IS THE RESPONSIBILITY OF THE CONTRACTOR TO CONTACT THE "DIG NUMBER" AND TO ASCERTAIN THE LOCATION OF ALL UNDERGROUND CONSTRUCTION IN THE AREA OF THE PROJECT.

THE CONTRACTOR SHALL CONDUCT TEST PITS TO VERIFY THE LOCATIONS OF UNDERGROUND UTILITIES WHERE POTENTIAL CONFLICTS MAY OCCUR OR WHERE DISCREPANCIES ARE PRESENT BETWEEN THE PLAN AND UNDERGROUND UTILITY MARK-OUTS.

THESE TEST PITS SHALL BE IN ADDITION TO THE SPECIFIED TEST PIT LOCATIONS AS DENOTED ON THE PLANS AND SHALL NOT BE LIMITED TO EXCAVATION SOLELY BUT INCLUDE ANY ADDITIONAL MEANS TO DETERMINING THE LOCATION OF UTILITIES IN QUESTION.



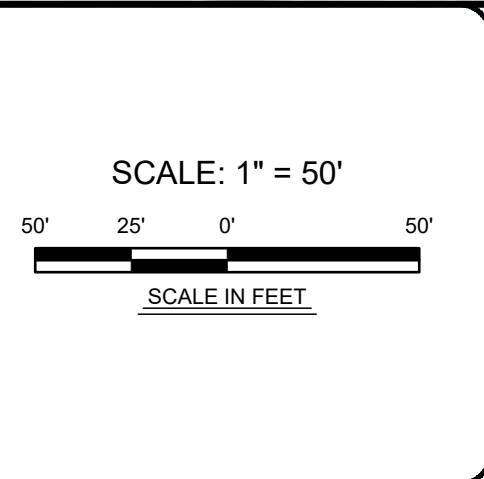
CALL BEFORE YOU DIG
1-800-272-1000

TO LOCATE UNDERGROUND UTILITIES
IF YOU'RE GOING TO DIG, BLAST OR DRILL
THREE (3) WORKING DAYS NOTICE

REMEMBER
IT'S THE LAW!

Dig Safely.

No.	REVISION	APPROVE	DATE
1	ISSUED FOR SUBMITTAL		7/27/2025
2	REVISED PER NJDOT COMMENTS		9/8/2025
3	REVISED PER NJDOT COMMENTS		10/24/2025
4	REVISED PER NJDOT COMMENTS		10/29/2025
5			
6			
7			
8			
9			




JAMES M DEYERLE, PE
NJ LICENSE #24GE06090400



Professional Services

450 DAVIS DRIVE, PLYMOUTH MEETING, PA 19462
OFFICE NUMBER: 484-344-2161



SOUTH JERSEY GAS
1 SOUTH JERSEY PLACE, ATLANTIC CITY, NJ 08401
TELEPHONE: (800) 581-9000 FAX: 800-852-2371

PROPOSED 12" STEEL GAS TRANSMISSION LINE
PERMIT DRAWINGS
CAPE MAY DIVISION

CAPE MAY LATERAL REPLACEMENT - PHASE 2
AVALON BLVD INTERSECTION - SOUTH

MIDDLE TWP	CAPE MAY	NEW JERSEY					
DRAWN BY	DT	DATE	10/24/2025	PLATE MAP	MULTIPLE		
CHECKED BY	RA	SCALE	1" = 50'	WORK ORDER	5436482		
APPROVED BY	JD	SHEET	14	OF	14	SHEET NUMBER	TCP-D4